

Children's Health Alliance of Wisconsin



WISCONSIN
ASTHMA
COALITION

★ Children's Health
Alliance of Wisconsin



Emergency Medical
Services for Children
WISCONSIN

★ Children's Health
Alliance of Wisconsin



Infant
Death
Center

★ Children's Health
Alliance of Wisconsin



**Keeping
Kids Alive**
IN WISCONSIN

★ Children's Health
Alliance of Wisconsin



WISCONSIN
**Medical
Home**

★ Children's Health
Alliance of Wisconsin



Oral Health

★ Children's Health
Alliance of Wisconsin



WISCONSIN
★ Children's Health
Alliance of Wisconsin



Keeping
Kids Alive
IN WISCONSIN

★ Children's Health
Alliance of Wisconsin



Fatality Review Case Reporting System

Understanding SUID Case
Registry through the Centers
for Disease Control and
Prevention

SUID Session Goals

- Define a SUID
- Identify SUID priority variables
- Learn to assign a SUID category

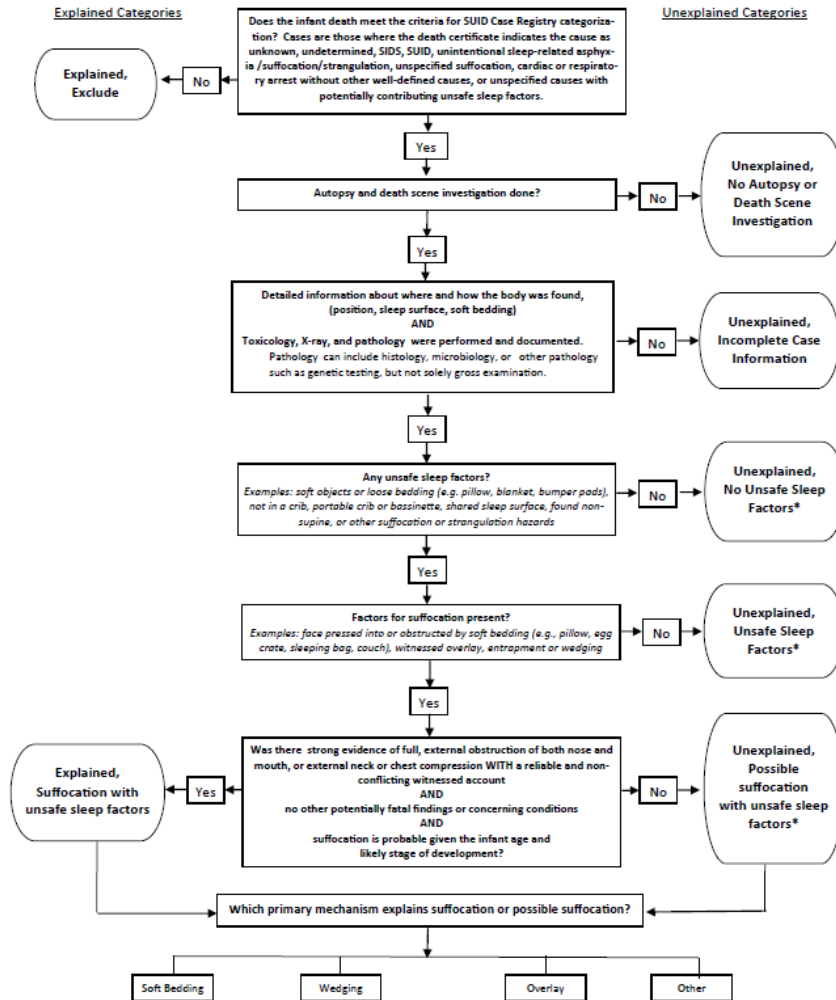
SUID Registry

- Sudden Unexpected Infant Death
- Infant death that occurs suddenly and unexpectedly, and whose cause is not immediately known before investigation
- Infant must be a resident of the state reporting the death to the registry
- Project of the Centers for Disease Control and Prevention (CDC)

Purpose of SUID registry

- Estimate burden of SUIDs nationwide
- Determine what factors define the highest risk groups for SUIDs
- Identify possible biologic and/or genetic mechanisms underlying some SUIDs
- ***Inform prevention efforts***

Decision-making algorithm for assigning SUID Case Registry categories



*Category includes cases that may or may not have other potentially fatal findings, concerning conditions, or competing cause of death, but how these factors contribute to death is uncertain.

Defining a SUID

Does the infant death meet the criteria for SUID Case Registry categorization? Cases are those where the death certificate indicates the cause as unknown, undetermined, SIDS, SUID, unintentional sleep-related asphyxia /suffocation/strangulation, unspecified suffocation, cardiac or respiratory arrest without other well-defined causes, or unspecified causes with potentially contributing unsafe sleep factors.

Defining a SUID

- G2: Immediate and underlying causes of death
- G3: Other significant conditions contributing to death
- G4: Injury information: Describe how injury occurred
- G5: Official manner of death

5. Official manner of death from the death certificate:

- ☐ Natural
- ☐ Accident
- ☐ Suicide
- ☐ Homicide
- ☐ Undetermined
- ☐ Pending
- ☐ U/K

6. Primary cause of death: Choose only 1 of the 4 major categories, then a specific cause. For pending, choose most likely cause.

☐ From an injury (external cause). Select one and answer G4:

- ☐ Motor vehicle and other transport, go to H1
- ☐ Fire, burn, or electrocution, go to H2
- ☐ Drowning, go to H3
- ☐ Unintentional asphyxia, go to H4
- ☐ Assault, weapon or person's body part, go to H5
- ☐ Fall or crush, go to H6
- ☐ Poisoning, overdose or acute intoxication, go to H7
- ☐ Undetermined injury, go to I1
- ☐ Other cause, go to H9
- ☐ U/K, go to I1

☐ From a medical cause. Select one:

- ☐ Asthma/respiratory, specify and go to H8
- ☐ Cancer, specify and go to H8
- ☐ Cardiovascular, specify and go to H8
- ☐ Congenital anomaly, specify and go to H8
- ☐ Diabetes, go to H8
- ☐ HIV/AIDS, go to H8
- ☐ Influenza, go to H8
- ☐ Low birth weight, go to H8
- ☐ Malnutrition/dehydration, go to H8
- ☐ Neurological/seizure disorder, go to H8
- ☐ Pneumonia, specify and go to H8
- ☐ Prematurity, go to H8
- ☐ SIDS, go to H8
- ☐ Other infection, specify and go to H8
- ☐ Other perinatal condition, specify and go to H8
- ☐ Other medical condition, specify and go to H8
- ☐ Undetermined medical cause, go to H8
- ☐ U/K, go to H8

☐ Undetermined if injury or medical cause, go to I1

☐ U/K go to I1

What Are the Priority Variables?

- Majority identified by CDC
- Additional variables identified by Alliance
- Reflected in annual SUID report

SUID Priority Variables

- Cases are identified, reviewed and entered by local team
- Alliance staff works with case reporter to review case report
 - Consistency in responses across teams
 - Reduction in missing and unknown priority variables

Group Exercise

- Review the priority variable list
- Which data sources or agencies are the most likely sources for each variable?
- Do any variables stand out as difficult to obtain?

Typically Tricky Variables

- Section A – Child information
 - A15: Insurance
 - A57: Newborn metabolic screen
- Section F – Investigation
 - F5: Imaging
 - F6: Additional tests

Typically Tricky Variables

- Section I1: SDY
- Section I2: Sleep Environment
 - Unsafe sleep factors: a, b, c, i, o ,r
 - Factors for suffocation: l, m, n, o
 - Suffocation v. possible suffocation: n, o

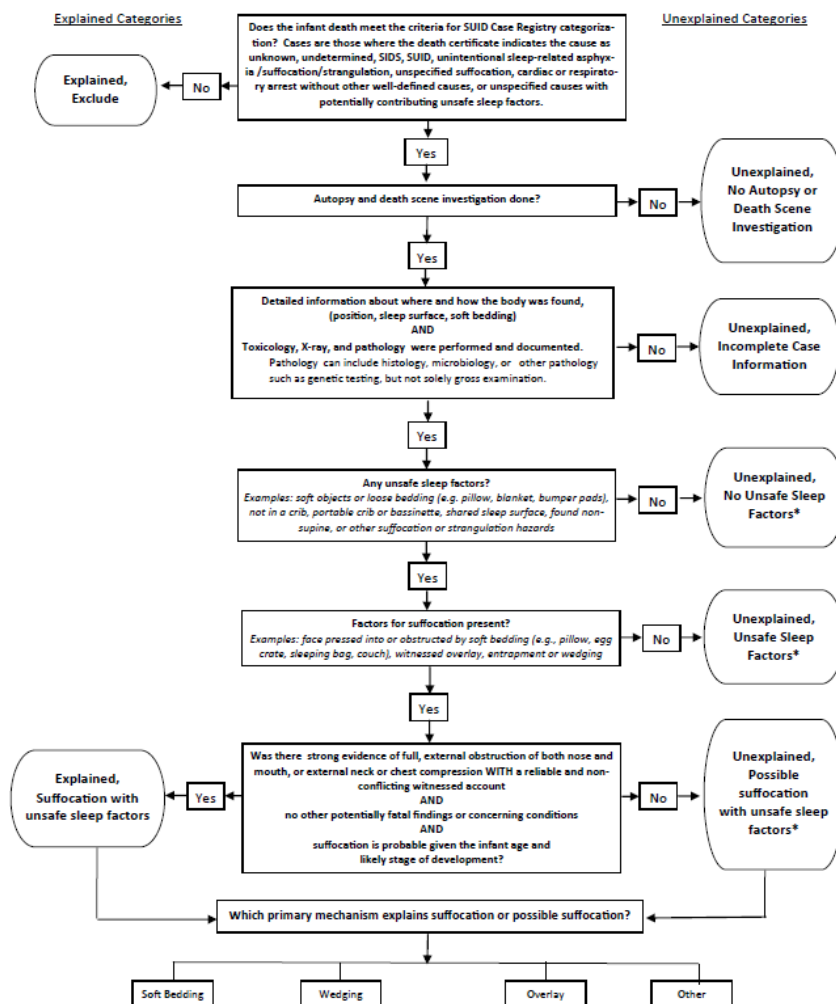
Section N

- N1: Is this an SDY or SUID case?
- N10: Categorization for SUID Case Registry
- Check box if SUID case is complete

N10: SUID categorization

- If response to M1 = yes, then team assigns SUID category based on algorithm
- Alliance confirms categorization during case cleaning
- Completeness of data abstracted prior and during CDR meeting critical

Decision-making algorithm for assigning SUID Case Registry categories



*Category includes cases that may or may not have other potentially fatal findings, concerning conditions, or competing cause of death, but how these factors contribute to death is uncertain.

Decision-making algorithm for assigning SUID Case Registry categories

Explained Categories

Explained,
Exclude

No

Does the infant death meet the criteria for SUID Case Registry categorization? Cases are those where the death certificate indicates the cause as unknown, undetermined, SIDS, SUID, unintentional sleep-related asphyxia /suffocation/strangulation, unspecified suffocation, cardiac or respiratory arrest without other well-defined causes, or unspecified causes with potentially contributing unsafe sleep factors.

Unexplained Categories

Unexplained Categories

Does the infant death meet the criteria for SUID Case Registry categorization? Cases are those where the death certificate indicates the cause as unknown, undetermined, SIDS, SUID, unintentional sleep-related asphyxia /suffocation/strangulation, unspecified suffocation, cardiac or respiratory arrest without other well-defined causes, or unspecified causes with potentially contributing unsafe sleep factors.

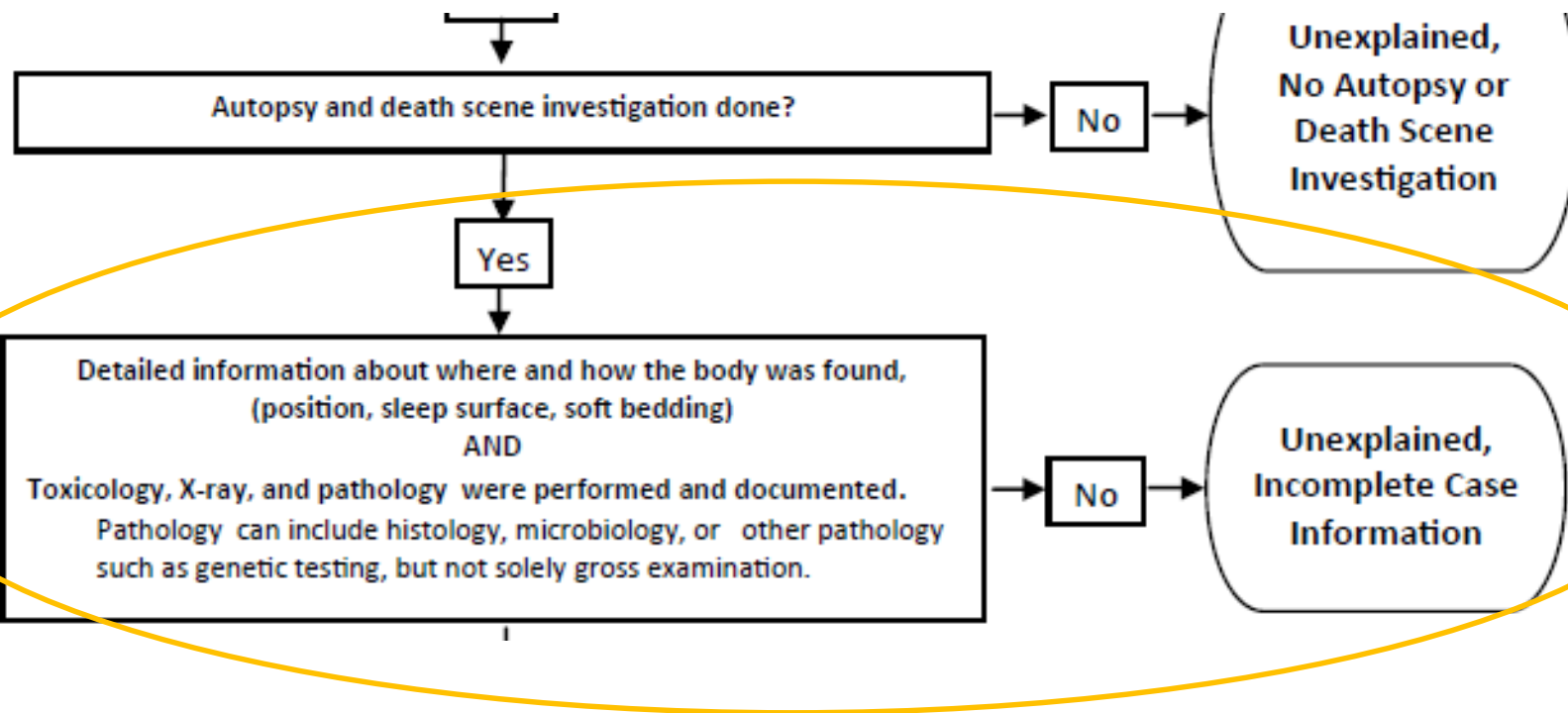
Yes

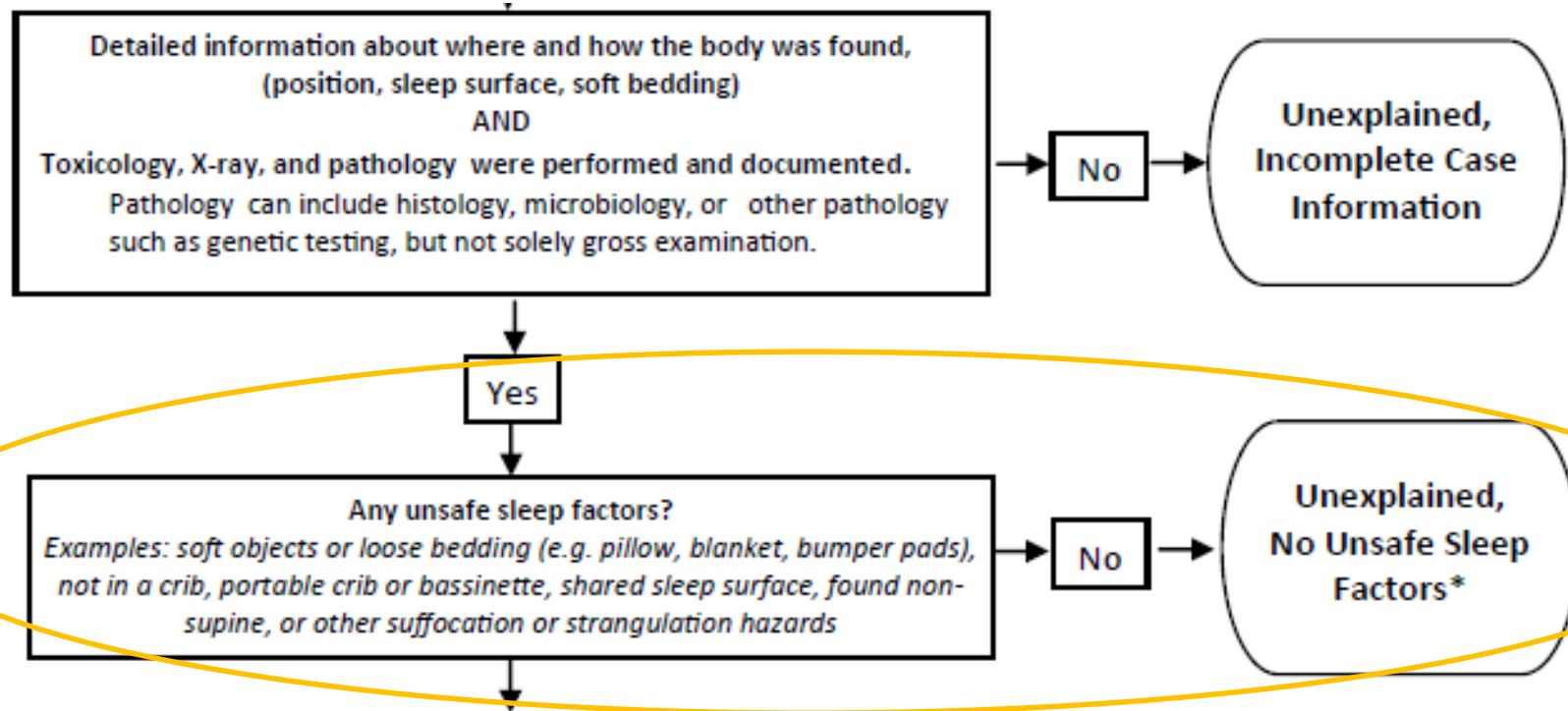
Autopsy and death scene investigation done?

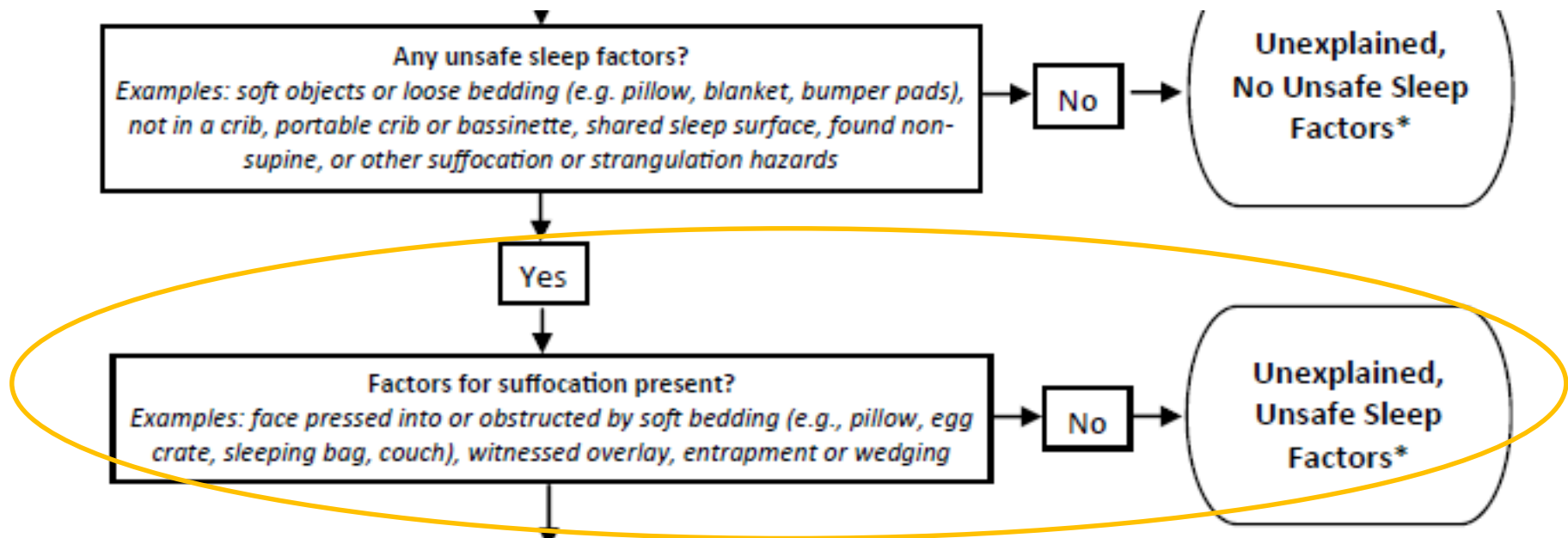
No

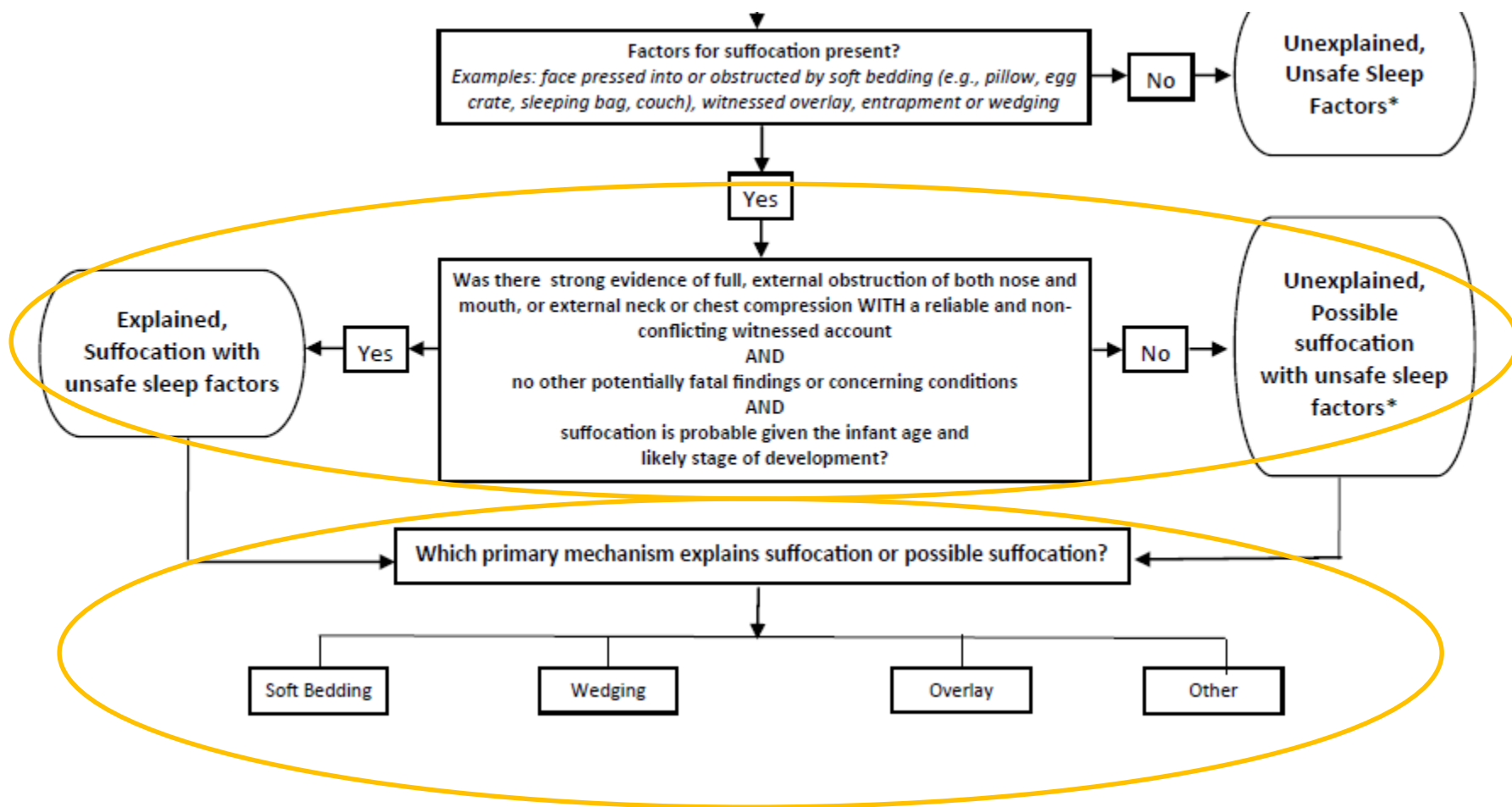
Unexplained,
No Autopsy or
Death Scene
Investigation

Yes









Mechanism for suffocation:

Soft bedding

- Soft or loose bedding, pillows, or stuffed toys on sleep surface obstructing airway.
- Example: Infant found face down or other position with airway obstruction.

Mechanism for suffocation: Wedging

- Wedging of infant between two objects such as a mattress and wall, bed frame, or furniture causing airway obstruction or compressing chest preventing respiration

Mechanism for suffocation: Overlay

- Shared sleep surface with other person overlaying or rolling on top of or against infant while sleeping and obstructing airway or compressing neck or chest area and preventing respiration

Mechanism for suffocation:

Other

- Factors, other than soft bedding, wedging or overlay causing an airway obstruction
- Example: Neck position of infant napping in car seat results in airway obstruction

*Category includes cases that may or may not have other potentially fatal findings, concerning conditions, or competing cause of death, but how these factors contribute to death is uncertain.

► Unexplained,
No Unsafe Sleep
Factors*

► Unexplained,
Unsafe Sleep
Factors*

► Unexplained,
Possible
suffocation
with unsafe sleep
factors*

Communication with the Alliance

- Email your Alliance coordinator when you are informed of a case that is a possible SUID
- Email your Alliance coordinator the case summaries you will review ahead of your CDR meeting
- We recommend teams enter data within 30 days of the review
- Alliance data program manager will clean case and communicate with team

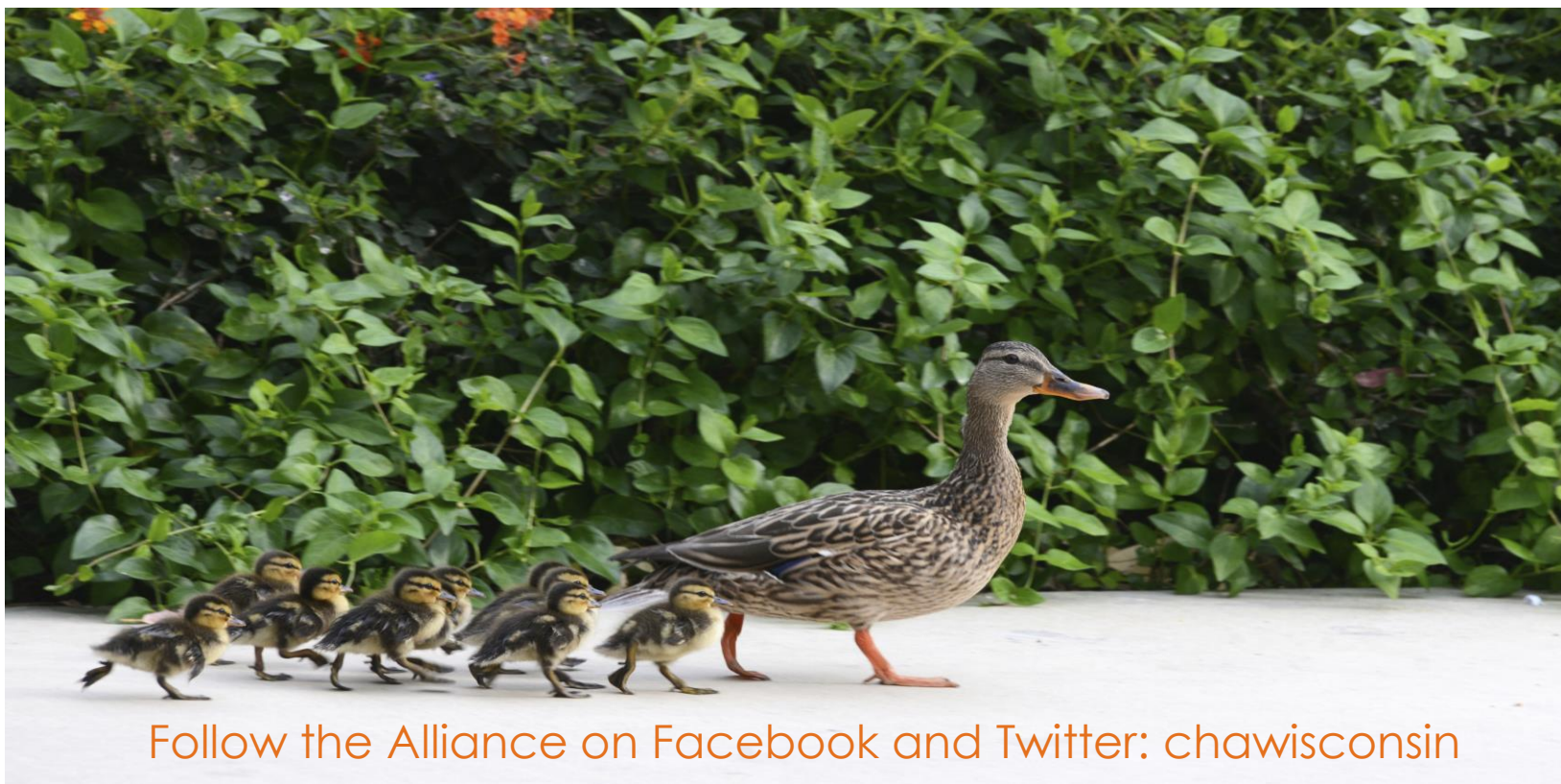
Mock Case Two

- Mock case scenario in packet on your table
- Review mock case
- Answer “Mock Case Two Questions” as a group

Questions and thank you

Amy Parry

aparry@chw.org or (414) 337-4568



Follow the Alliance on Facebook and Twitter: [chawisconsin](#)