

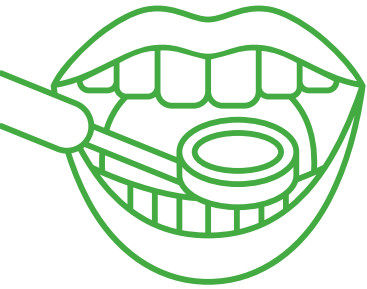
INFOGRAPHIC SERIES

Children's Health
Alliance of Wisconsin

Wisconsin Medical
Dental Integration

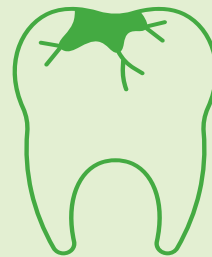
THE NEED

Oral health is essential
to overall health and
well-being



Caries, or tooth decay, is the most common
chronic childhood health condition.

Although caries are largely preventable, if untreated, they can lead to pain, inflammation, and the spread of infection, difficulty eating, poor nutrition, delayed physical development, and poor self-image and socialization and even have negative affects on academic performance.



Oral Health

★ Children's Health
Alliance of Wisconsin



In 2021 in Wisconsin, nearly 20,000 emergency room visits for preventable dental conditions were reported

Wisconsin EPA Tracker



In 2020, only 33% of those ages 1 to 20 who were eligible to receive Medicaid funded dental preventive services actually received them

<https://kidshealthcarereport.ccf.georgetown.edu/states/wisconsin/>

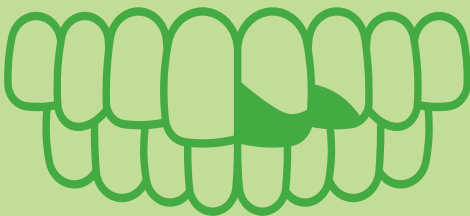


In 2021, more than 70,000 Wisconsin children age 5 and younger, enrolled in Medicaid, visited their physician, but not a dentist.

Wisconsin EPSDT CMS 416 Report (2021)

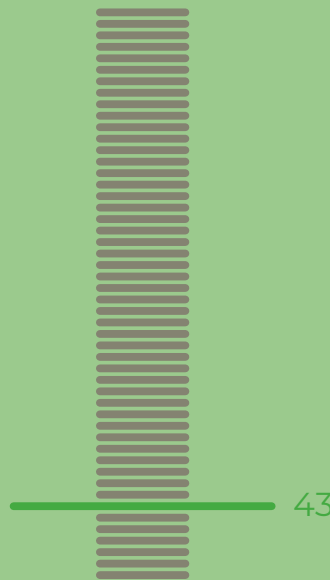
By age 5, 1 in 2 Wisconsin Head Start children have had tooth decay

1:2



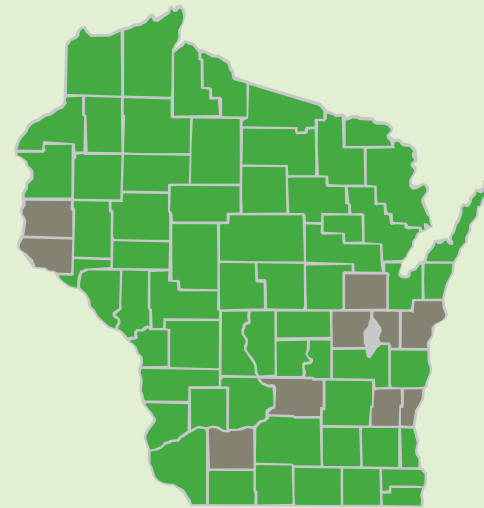
<https://www.dhs.wisconsin.gov/publications/p01702a.pdf>

Wisconsin ranks 43rd in the nation for access to dental care for children



Evers' proposals on dental care: 'Putting money where the mouth is' (jsonline.com)

62 out of the 72 counties are considered dental professional shortage areas affecting over 2 million residents



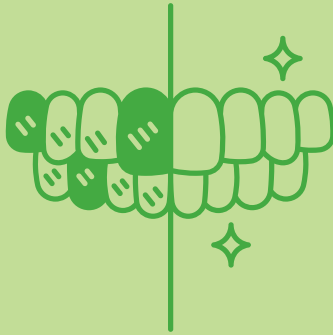
<https://www.ruralhealthinfo.org/charts/9?state=WI>

Medical dental integration as a critical part of the solution:

Multidisciplinary approaches such as integrating a dental hygienist into medical teams to deliver oral health care in settings outside the dental office help to:



expand the number and type of patients who can obtain care

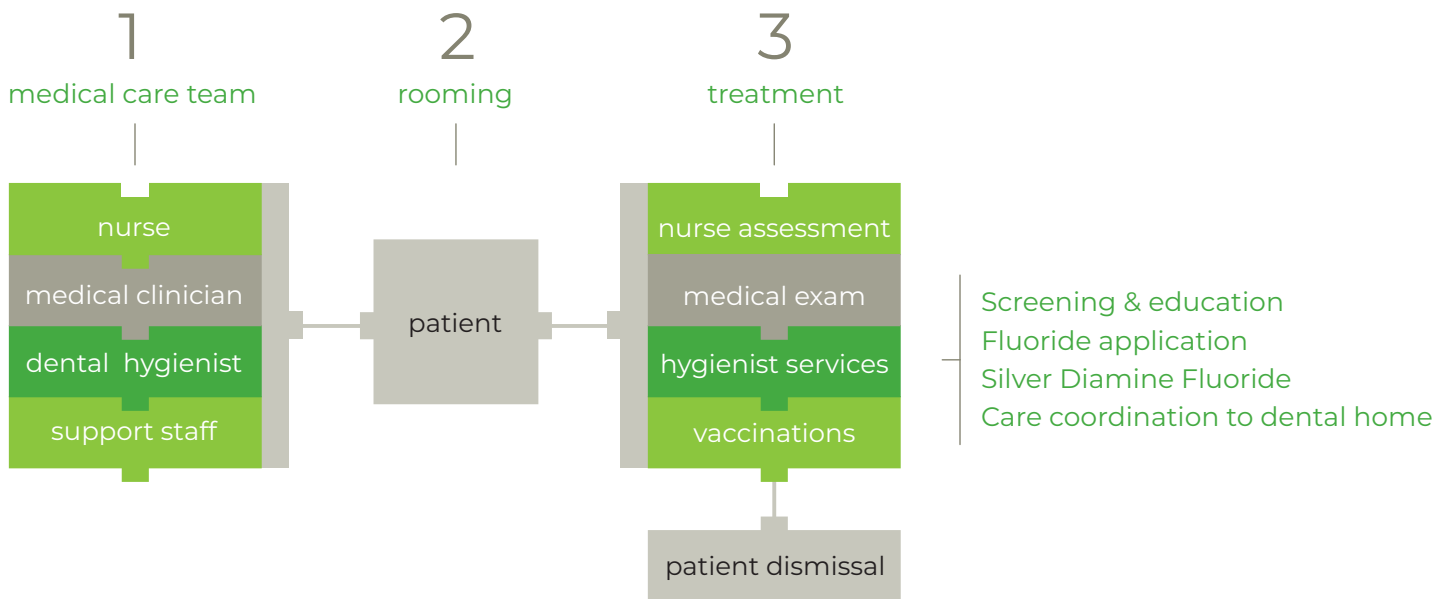


improve patient outcomes



reduce the cost of care

INTEGRATED DENTAL HYGIENIST MODEL



11

health systems and centers



17,200+

patients seen for dental care



From a provider's perspective it's been just tremendous - knowing my patients are getting the care they need - for something that has been a chronic issue

PEDIATRICIAN AT AN INTEGRATED CLINIC

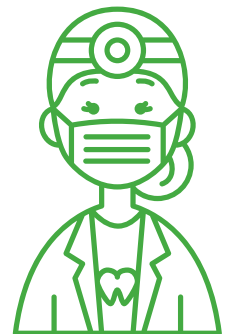
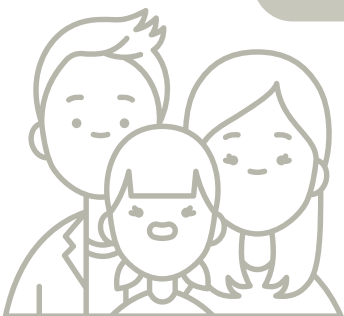


...I have seen rampant decay on children who do not even have their entire primary dentition erupted, I have seen dental abscesses the size of a quarter, and I've seen an enormous lack of protective risk factors in many of my families. However, something else I have seen is a family's acceptance of a medically integrated hygienist into well-child visit...

INTEGRATED DENTAL HYGIENIST

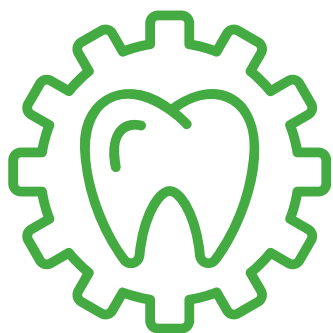
It's very nice to know that they take good care of my baby

MOTHER (CARE RECEIVED FROM AN INTEGRATED DENTAL HYGIENIST DURING HER CHILD'S WELL VISIT)



Future opportunity:

Want to begin integration in your health system for your community?



To meet the dental needs of our communities - dental and other health care professionals must continue to work together to provide integrated care in a variety of settings to aid in reducing and eliminating social, economic, and other systemic inequities that affect oral health and access to care.

Consider:

As a medical team adding basic oral health assessments, fluoride and care coordination to your patient care

Incorporating minimally invasive approaches to dental and medical visits

As a medical team adding chronic disease screenings to your patient care

The option of adding dental hygienists to medical teams in your community to create additional dental access points



CONTACT US

Wisconsin Medical Dental Integration:

<https://www.chawisconsin.org/initiatives/oral-health/wisconsin-medical-dental-integration/>

To learn more about how you can join medical dental integration efforts contact:

Jenna Linden jlinden@childrenswi.org

Lindsay Deinhammer ldeinhammer@childrenswi.org