

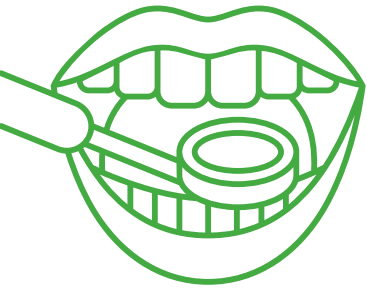
INFOGRAPHIC SERIES

Children's Health
Alliance of Wisconsin

Wisconsin Medical
Dental Integration

THE NEED

Oral health is essential
to overall health and
well-being



Caries, or tooth decay, is the most common
chronic childhood health condition.

Although caries are largely preventable, if untreated, they can lead to pain, inflammation, and the spread of infection, difficulty eating, poor nutrition, delayed physical development, and poor self-image and socialization and even have negative affects on academic performance.



Oral Health

★ Children's Health
Alliance of Wisconsin

From a provider's perspective it's been just tremendous - knowing my patients are getting the care they need - for something that has been a chronic issue

PEDIATRICIAN AT AN INTEGRATED CLINIC

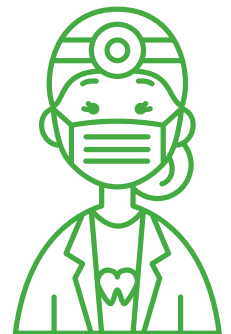
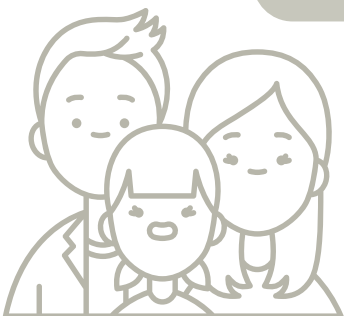


...I have seen rampant decay on children who do not even have their entire primary dentition erupted, I have seen dental abscesses the size of a quarter, and I've seen an enormous lack of protective risk factors in many of my families. However, something else I have seen is a family's acceptance of a medically integrated hygienist into well-child visit...

INTEGRATED DENTAL HYGIENIST

It's very nice to know that they take good care of my baby

MOTHER (CARE RECEIVED FROM AN INTEGRATED DENTAL HYGIENIST DURING HER CHILD'S WELL VISIT)



Future opportunity:

Want to begin
integration in your
health system for
your community?



To meet the dental needs of our communities - dental and other health care professionals must continue to work together to provide integrated care in a variety of settings to aid in reducing and eliminating social, economic, and other systemic inequities that affect oral health and access to care.

Consider:

As a medical team adding basic oral health assessments, fluoride and care coordination to your patient care

Incorporating minimally invasive approaches to dental and medical visits

As a medical team adding chronic disease screenings to your patient care

The option of adding dental hygienists to medical teams in your community to create additional dental access points



CONTACT US

Wisconsin Medical Dental Integration:

<https://www.chawisconsin.org/initiatives/oral-health/wisconsin-medical-dental-integration/>

To learn more about how you can join medical dental integration efforts contact:

Jenna Linden jlinden@childrenswi.org

Lindsay Deinhammer ldeinhammer@childrenswi.org