

#ForKidsHealth Summit

BROOKFIELD CONFERENCE CENTER | 325 S. MOORLAND RD. | BROOKFIELD, WI 53005

Celebrating



30

JOIN THE
SOCIAL MEDIA
CONVERSATION
[#ForKidsHealth](#)

Welcome

Dear friends of Children's Health Alliance of Wisconsin,

Our entire Children's Health Alliance of Wisconsin (the Alliance) team and Alliance Advisory Board are grateful and honored that you have chosen to join us at the #ForKidsHealth Summit and celebrate our 30-year anniversary. We're grateful for our incredible partners who amplify our shared voice for children's health and bring our mission to life. Together, we achieve remarkable outcomes for the health of Wisconsin's kids.

We will certainly celebrate the milestones and accomplishments of the past 30 years over the next two days, but our focus must be on the future. The #ForKidsHealth Summit brings together all of our key initiatives under one roof, for the first time, to focus on health equity. The ability for us all to work collectively and collaboratively has, and will, truly make a difference in the lives of children today and for many years to come.

Thank you for your ongoing support, advocacy and most importantly, your trust as we turn the page on the past 30 years and look to the future #ForKidsHealth.

Enjoy the Summit!



Matt Crespin, MPH, RDH, FADHA
Executive Director
Children's Health Alliance of Wisconsin



Diane Gerlach, DO
Children's Health Alliance of Wisconsin Advisory Board - Chair
Pediatrician, Aurora Children's Health (Advocate Health)

TABLE OF CONTENTS
(section quick links)

Schedule summary

Children's Health Alliance of Wisconsin

Day 1 session details

Day 2 session details

Keynote speakers

Additional speakers

Sponsors



#FORKIDSEALTH SUMMIT PROGRAM

DAY 1: MONDAY, OCT. 7		DAY 2: TUESDAY, OCT. 8	
TIME	DAY 1 SESSIONS	TIME	DAY 2 SESSIONS
10 a.m. - 10:15 a.m.	Welcome (Connect AB) Kirsten Johnson, MPH, CPH, CHES	7:30 a.m. - 8:30 a.m.	Breakfast (Connect AB)
10:15 a.m. - 11:15 a.m.	KEYNOTE  Derek Mosley, JD Unconscious Bias - Knowing What You Don't Know (Connect AB)	8:30 a.m. - 9:30 a.m.	KEYNOTE  Veronica Gunn, MD, MPH, FAAP Changing Systems to Improve Child Health (Connect AB)
11:15 a.m. - 11:25 a.m.	Break with exhibitors	9:30 a.m. - 9:45 a.m.	Break
11:25 a.m. - 12:25 p.m.	BREAKOUT SESSIONS  <i>Please select one session:</i>  <ul style="list-style-type: none"> Engaging the Community In Addressing Their Greatest Needs (Collaborate AB) Equitable Asthma Management: A Closer Look at Addressing Asthma in Wisconsin Schools (Connect C3) From Planning to Prevention: Keeping Kids Alive in Wisconsin (Connect C1) 	9:45 a.m. - 10:45 a.m.	BREAKOUT SESSIONS  <i>Please select one session:</i>  <ul style="list-style-type: none"> On the Same Wavelength: Connecting Through Personal Stories (Connect C1) Oral Health Advancements: Update From the Centers for Medicare & Medicaid Services (Collaborate AB) Enhancing Equity in Fatality Review (Connect C3)
12:25 p.m. - 1:15 p.m.	Lunch (Connect AB)	10:45 a.m. - 11 a.m.	Break
1:15 p.m. - 2:15 p.m.	BREAKOUT SESSIONS  <i>Please select one session:</i>  <ul style="list-style-type: none"> Housing: A Key Social Determinant of Health (Connect C3) Practical Strategies for Increasing Consumer Engagement and Leveraging Consumer Voice (Connect C1) Transforming the Oral Health Landscape: A Panel Conversation on Innovative Methods to Enhance Dental Access in Wisconsin (Collaborate AB) 	11 a.m. - noon	BREAKOUT SESSIONS  <i>Please select one session:</i>  <ul style="list-style-type: none"> Social Determinants of Health and Policy Implications (Collaborate AB) Connecting Systems From Early Identification, to Care Coordination (Connect C1) Resilience for Professionals Exposed to Vicarious Trauma (Connect C3)
2:15 p.m. - 2:25 p.m.	Break	Noon - 12:45 p.m.	Lunch (Connect AB)
2:25 p.m. - 3:25 p.m.	BREAKOUT SESSIONS  <i>Please select one session:</i>  <ul style="list-style-type: none"> A Trust-Based Approach to Health and Food Security (Collaborate AB) Is Your Emergency Department Pediatric Ready? (Connect C1) Love My Air Wisconsin: Connecting Communities to Air Quality Resources Through a School-Based Program (Connect C3) 	12:45 p.m. - 1:45 p.m.	KEYNOTE  Mark Del Monte, JD The Art of the Possible: Advancing Child Health in Challenging Times (Connect AB)
3:25 p.m. - 3:35 p.m.	Break	1:45 p.m. - 2 p.m.	Closing and adjourn (Connect AB)
3:35 p.m. - 4:35 p.m.	Celebrating 30 Years of Impacting Health Equity (Connect AB)		
4:35 p.m. - 6 p.m.	30-year celebration reception (Atrium)		

#FORKIDSHEALTH SUMMIT PROGRAM

CHILDREN'S HEALTH ALLIANCE OF WISCONSIN

WHO WE ARE

The Alliance is Wisconsin's voice for children's health. We raise awareness, mobilize leaders, impact public health and implement programs proven to work.

Key initiatives: emergency care, environmental health, food security, injury prevention and death review, medical home and oral health.

OUR MISSION

To ensure Wisconsin children are healthy, safe and able to thrive.

OUR COMMITMENT TO INCLUSION, DIVERSITY AND EQUITY

As Wisconsin's voice for children's health we are an advocate for families and a catalyst for creating healthier communities. The Alliance is dedicated to the values of inclusion, diversity and equity (ID&E) in all our work. We are working to formalize our commitment to these values with support of both our advisory board and staff. We are engaged with Children's Wisconsin in a broader system wide ID&E journey. [Click here for full statement.](#)

OUR FUNDING

The Alliance is grateful for the financial support from partners. To learn more about our funding partners, [click here.](#)

ADVISORY BOARD

Sarah Beversdorf, MPH, MSW

Jodi Bloch

Bridget Clementi, MBA

Kevin Dahlman, MD

Christopher Ford, MD, FACEP

Caroline Gomez-Tom, MSW

Michael Kim, MD

Jeremy Levin, MHA

Todd Mahr, MD, FAAP, FACAAI, FAAAAI

Tiffany Meredith, APSW, MSW

Brittany Mews, RN, BSN

Charlene Mouille

Thao Nguyen, DMD

Andrea Swenson, PhD

Brian Vigue

Heidi Warpinski, CPNP, RN, MS

James Wilson

CHAIR

Diane Gerlach, DO

VICE CHAIR

Jay Shrader, MHA

#FORKIDSHALTH SUMMIT PROGRAM

DAY 1 - SESSION DETAILS

10 A.M. - 10:15 A.M. WELCOME (Connect AB)

MATT CRESPI, MPH, RDH, FADHA, EXECUTIVE DIRECTOR, CHILDREN'S HEALTH ALLIANCE OF WISCONSIN
KIRSTEN JOHNSON, MPH, CPH, CHES, SECRETARY-DESIGNEE, WISCONSIN DEPARTMENT OF HEALTH SERVICES

10:15 A.M. - 11:15 A.M. KEYNOTE (Connect AB)

UNCONSCIOUS BIAS - KNOWING WHAT YOU DON'T KNOW

DEREK MOSLEY, JD, DIRECTOR OF THE LUBAR CENTER FOR PUBLIC POLICY RESEARCH AND CIVIC EDUCATION, MARQUETTE UNIVERSITY LAW SCHOOL

Unconscious bias is a learned stereotype that is automatic, unintentional, deeply ingrained, universal and able to influence behavior. Unconscious bias seeps into decisions that affect recruitment, retention, hiring, access to health care, banking, housing, education, the justice system, providing services, interpersonal interactions and outcomes in ways that can disadvantage both individuals and groups of people. We all have some form of unconscious bias, and the key is to recognize that we have it and employ techniques to mitigate it.

11:15 A.M. - 11:25 A.M. BREAK WITH EXHIBITORS

11:25 A.M. - 12:25 P.M. BREAKOUT SESSIONS (PLEASE SELECT ONE SESSION)

ENGAGING THE COMMUNITY IN ADDRESSING THEIR GREATEST NEEDS (Collaborate AB)

SARAH BEVERSDORF, MPH, MSW - ASPIRUS HEALTH
BRIDGET CLEMENTI, MBA - CHILDREN'S WISCONSIN
JAY SHRADER, MHA - MARSHFIELD CLINIC HEALTH SYSTEM

This session will focus on how three health systems have engaged their communities in conducting a community health needs assessment and how systems are responding to address the areas of greatest need.

EQUITABLE ASTHMA MANAGEMENT: A CLOSER LOOK AT ADDRESSING ASTHMA IN WISCONSIN SCHOOLS (Connect C3)

NICHOLAS ANTOS, MD, FAAP - CHILDREN'S WISCONSIN AND THE MEDICAL COLLEGE OF WISCONSIN
SAMANTHA BUSKO, MSN - LITTLE CHUTE AREA SCHOOL DISTRICT
MOLLY COLLINS, MS - AMERICAN LUNG ASSOCIATION
MEGAN ELDERBROOK, MPH, CHES - WISCONSIN DEPARTMENT OF HEALTH SERVICES
JESSICA SCHAUB, BSN, RN - PORTAGE COMMUNITY SCHOOL DISTRICT

This session will discuss how statewide asthma data drives the work of the Wisconsin Asthma Coalition in order to reduce asthma disparities and the burden of asthma in the state. A panel of speakers will share specific examples of current work being done in schools statewide to promote equity in asthma management.

#FORKIDSHEALTH SUMMIT PROGRAM

DAY 1 - SESSION DETAILS (cont.)

FROM PLANNING TO PREVENTION: KEEPING KIDS ALIVE IN WISCONSIN (Connect C1)

JAMIE PENZA - WAUKESHA COUNTY PUBLIC HEALTH

STEPHANIE THIEDE, RN, BSN - OUTAGAMIE COUNTY PUBLIC HEALTH

This session will include an overview of statewide child injury and fatality data. Learn about the prevention work as a result of child death reviews, accompanied by examples of prevention projects underway in local communities.

12:25 P.M. - 1:15 P.M. LUNCH AND RECOGNITION OF THE ALLIANCE FOUNDING PARTNERS (Connect AB)

1:15 P.M. - 2:15 P.M. BREAKOUT SESSIONS (PLEASE SELECT ONE SESSION)

HOUSING: A KEY SOCIAL DETERMINANT OF HEALTH (Connect C3)

HARRY DETTINGER | KIMBERLY SCHNEIDER, RN | MOLLY ZEMKE, ASHP

WISCONSIN DEPARTMENT OF HEALTH SERVICES

Healthy communities require healthy housing. Learn more about Wisconsin's award-winning Asthma-Safe Homes Program and Lead-Safe Homes Program. Hear from program staff as they share results, successes and lessons learned.

PRACTICAL STRATEGIES FOR INCREASING CONSUMER ENGAGEMENT AND LEVERAGING CONSUMER VOICE (Connect C1)

LAMIKKA JAMES, AAS - ALIA CONSULTING

TIFFANY MEREDITH, APSW, MSW - ALIA CONSULTING

There's a saying that goes, "the people closest to the problem are closest to the solution." This is why elevating consumer voice and prioritizing consumer engagement is so important. In this interactive workshop, participants will delve into the fundamental principles for increasing consumer engagement and elevating their voice. Participants will learn why consumer voice is critical to program development, key considerations for increasing engagement and red flags to avoid. Leave with practical strategies for increasing consumer voice and a plan for getting started at your organization.

TRANSFORMING THE ORAL HEALTH LANDSCAPE: A PANEL CONVERSATION ON INNOVATIVE METHODS TO ENHANCE DENTAL ACCESS IN WISCONSIN (Collaborate AB)

RICHELLE ANDRAE, MPA - WISCONSIN PRIMARY HEALTH CARE ASSOCIATION

SKYLAR CAPRIOLA, MPH - WISCONSIN DEPARTMENT OF HEALTH SERVICES

THOMAS HUFFER, MD, MS, FAAP - HSHS ST. VINCENT CHILDREN'S HOSPITAL & PREVEA HEALTH

TARA SKAR, BSDH, RDH - NORTHLAKES COMMUNITY CLINIC

Wisconsin communities are taking innovative approaches to improving oral health for their residents. Learn about the current state of oral health in Wisconsin, and how colleagues are addressing disparities through medical dental integration, school based programming, leveraging unique partnerships and the future impact of dental therapists joining the dental team.

2:15 P.M. - 2:25 P.M. BREAK

#FORKIDSHEALTH SUMMIT PROGRAM

DAY 1 - SESSION DETAILS (cont.)



2:25 P.M. - 3:25 P.M. BREAKOUT SESSIONS (PLEASE SELECT ONE SESSION)

A TRUST-BASED APPROACH TO HEALTH AND FOOD SECURITY (Collaborate AB)

NANCY ARCE-AGUILAR - FEEDING AMERICA EASTERN WISCONSIN

AMANDA BEAVIN - DATA YOU CAN USE

CONSTANCE GUNDACKER, MD, MPH, FAAP - CHILDREN'S WISCONSIN AND THE MEDICAL COLLEGE OF WISCONSIN

VAL MACMILLAN - NOURISHMKE COMMUNITY FOOD CENTERS

A collaborative approach to addressing food insecurity not only enhances the efficiency and effectiveness of interventions, but also recognizes the multifaceted nature of food insecurity. Hear from a panel of FoodCare partners, as they highlight examples of how clinics, pantries and food banks are working together. They will discuss a shared navigator model, how community members are being engaged and where the FoodCare team is at in the data sharing journey.

IS YOUR EMERGENCY DEPARTMENT PEDIATRIC READY? (Connect C1)

MICHELLE HACKETT, RN, BSN, CEN - PROHEALTH CARE

MAUREEN LUETJE, DO - CHILDREN'S WISCONSIN AND THE MEDICAL COLLEGE OF WISCONSIN

This session will focus on general pediatric readiness and why, from a national lens, it is so important that emergency departments (EDs) are pediatric ready. Gain an understanding of known gaps in pediatric readiness, and learn how Wisconsin EDs are implementing changes resulting in improved pediatric readiness.

LOVE MY AIR WISCONSIN: CONNECTING COMMUNITIES TO AIR QUALITY RESOURCES THROUGH A SCHOOL-BASED PROGRAM (Connect C3)

KATE BEARDMORE, MPH - WISCONSIN DEPARTMENT OF HEALTH SERVICES

CRAIG CZARNECKI - WISCONSIN DEPARTMENT OF NATURAL RESOURCES

LINDSAY HAAS - WISCONSIN DEPARTMENT OF NATURAL RESOURCES

ERIKA KLUETMEIER - WISCONSIN DEPARTMENT OF HEALTH SERVICES

SARAH KROENING, MSpEd - CHILDREN'S HEALTH ALLIANCE OF WISCONSIN

Unhealthy air can lead to health issues for children, including: lung disease, decreased lung function, development of asthma, asthma attacks and increased hospital admissions and emergency department visits. Learn about Love My Air Wisconsin, a new school-based program providing real-time air quality data to schools via a sensor, and the positive impacts this program has on students, families, school staff and community members.

3:25 P.M. - 3:35 P.M. BREAK

3:35 P.M. - 4:35 P.M. CELEBRATING 30 YEARS OF IMPACTING HEALTH EQUITY (Connect AB)

Join us on our journey as we explore the highlights over the past 30 years of the impact the Alliance has had on children's health in Wisconsin.

4:35 P.M. - 6 P.M. 30-YEAR CELEBRATION RECEPTION (Atrium)

Join us as we celebrate 30 years of the Alliance! Small bites and a cash bar will be provided.

#FORKIDSHEALTH SUMMIT PROGRAM

DAY 2 – SESSION DETAILS

7:30 A.M. – 8:30 A.M. BREAKFAST (Connect AB)

8:30A.M. – 9:30 A.M. KEYNOTE (Connect AB)



CHANGING SYSTEMS TO IMPROVE CHILD HEALTH

VERONICA GUNN, MD, MPH, FAAP, CHIEF EXECUTIVE OFFICER AND CO-FOUNDER, GENESIS HEALTH CONSULTING

Health is an outcome that is influenced by physical, emotional, social and economic environments, in addition to our genetics and health related behaviors. Thus, many systems play a role in supporting child health in Wisconsin – health care, public health, education, public safety and others. This session will explore the ways in which systems can contribute to inequitable child health outcomes, and ways that individuals, communities and organizations can advance child health and health equity through systems change.

9:30 A.M. – 9:45 A.M. BREAK



9:45 A.M. – 10:45 A.M. BREAKOUT SESSIONS (PLEASE SELECT ONE SESSION)

ON THE SAME WAVELENGTH: CONNECTING THROUGH PERSONAL STORIES (Connect C1)

MEGAN MCGEE – EX FABULA

True, personal stories are powerful tools for building relationships, sharing knowledge and even managing change. This session will review scientific research about personal stories and the brain. It will also highlight ways that personal stories can be used to advance public health. Attendees will get to apply their learning via some low-pressure, interactive activities.

ORAL HEALTH ADVANCEMENTS: UPDATE FROM THE CENTERS FOR MEDICARE & MEDICAID SERVICES (Collaborate AB)

NATALIA CHALMERS, DDS, MHSc, PhD – CENTERS FOR MEDICARE & MEDICAID SERVICES

This session will focus on recent updates in policies, programs and initiatives meant to enhance oral health care services for Medicare and Medicaid populations. Learn about the latest regulatory changes and their implications for providers and patients in the content management system framework, and understand how these changes are designed to improve the accessibility and quality of oral health care for millions of Americans.

ENHANCING EQUITY IN FATALITY REVIEW (Connect C3)

ABBY COLLIER, DrPH – NATIONAL CENTER FOR FATALITY REVIEW AND PREVENTION

This session will discuss the importance of equity in child fatality review. Learn strategies that can be used to strengthen knowledge necessary to influence policy, review systems of oppression that impact children and explore how these strategies influence implicit biases. Understand actions steps we can take to disrupt biases and incorporate equity into fatality review programs.

10:45 A.M. – 11 A.M. BREAK

#FORKIDSHHEALTH SUMMIT PROGRAM

DAY 2 - SESSION DETAILS (cont.)



11 A.M. - NOON BREAKOUT SESSIONS (PLEASE SELECT ONE SESSION)

SOCIAL DETERMINANTS OF HEALTH AND POLICY IMPLICATIONS (Collaborate AB)

JODI BLOCH - CHILDREN'S WISCONSIN

JEREMY LEVIN, MHA - RURAL WISCONSIN HEALTH COOPERATIVE

This interactive session will engage attendees on exploring various policy opportunities to address health equity. Speakers will share success realized in Wisconsin and opportunities to engage in future policy that addresses social drivers.

CONNECTING SYSTEMS FROM EARLY IDENTIFICATION, TO CARE COORDINATION (Connect C1)

MARY EHLENBACH, MD - UNIVERSITY OF WISCONSIN SCHOOL OF MEDICINE AND PUBLIC HEALTH | UW HEALTH KIDS

ELLEN ELLINGSWORTH, MS, RD, CD, CLC - COLUMBIA COUNTY DEPARTMENT OF HEALTH AND HUMAN SERVICES

AMY WILSON - FIRST 5 FOX VALLEY

Care coordination of services can be hard. The hardest part? Sectors working on similar goals often work in silos. Hear from a panel of partners as they share ways they have worked to align systems statewide to improve care coordination for families. This panel will showcase cross-sector collaboration, processes and strategies to increase early identification and care coordination for children in Wisconsin.

RESILIENCE FOR PROFESSIONALS EXPOSED TO VICARIOUS TRAUMA (Connect C3)

AMY L. CLINE, MSW, APSW - CHILDREN'S HEALTH ALLIANCE OF WISCONSIN

This session will provide a brief overview of child fatality review, followed by addressing the vicarious trauma that inevitably accompanies this difficult work. Fatality teams review the most tragic events occurring in their communities, and this session will provide strategies to transform vicarious trauma into vicarious post-traumatic growth.

NOON - 12:45 P.M. LUNCH (Connect AB)

12:45 P.M. - 1:45 P.M. KEYNOTE (Connect AB)



THE ART OF THE POSSIBLE: ADVANCING CHILD HEALTH IN CHALLENGING TIMES

MARK DEL MONTE, JD, CEO/EXECUTIVE VICE PRESIDENT, AMERICAN ACADEMY OF PEDIATRICS

Advances in medical science, public health and public policy, brought forth the modern era of child health where children live a longer healthier life course. But new challenges test this progress. As we continue to grapple with the after-effects of the pandemic, as well as the economic, political and social uncertainties of our time, we must be reminded of the challenges of the past, how far we have come and all that is possible if we continue to work together to advocate for healthier children and a more equitable future for us all.

1:45 P.M. - 2 P.M. CLOSING AND ADJOURN (Connect AB)

KEYNOTE SPEAKERS

KIRSTEN JOHNSON, MPH, CPH, CHES

SECRETARY-DESIGNEE, WISCONSIN DEPARTMENT OF HEALTH SERVICES

Johnson has over 20 years of experience as a public health leader in complex local, state, national and international organizations. She joins the administration after previously serving as the health commissioner for the city of Milwaukee following her appointment in January 2021. Prior to serving the city of Milwaukee, Johnson led the Washington Ozaukee Public Health Department for more than a decade as the director and health officer, overseeing the merger of the two counties' health departments and later leading a multi-county pandemic response as well as various other public health and health equity initiatives. Johnson has her master's degree in public health from Tulane University of Public Health and Tropical Medicine and holds certifications as a public health professional and certified education specialist.



DEREK MOSLEY, JD

DIRECTOR OF THE LUBAR CENTER FOR PUBLIC POLICY RESEARCH AND CIVIC EDUCATION, MARQUETTE UNIVERSITY LAW SCHOOL

Judge Mosley graduated from Marquette University Law School in 1995. After graduation he served as an assistant district attorney for Milwaukee County from 1995-02. As an assistant district attorney, he represented Wisconsin in over 1,000 criminal prosecutions. In 2002, Judge Mosley was appointed municipal court judge in Milwaukee. At the time of his appointment, he was the youngest African American to be appointed judge in the State of Wisconsin. For 10 years, Judge Mosley served as the chief judge of the Milwaukee Municipal Court. In 2023, Judge Mosley became the director of the Lubar Center for Public Policy Research and Civic Education at Marquette University Law School. Judge Mosley sits on the Board of Directors of several organizations including Froedtert Hospital, the Urban Ecology Center, the YMCA of Metropolitan Milwaukee, Safe & Sound, Divine Savior Holy Angels High School, the United Way Diversity Leadership Committee and Transcenter for Youth. He has been a lecturer at both Marquette University Law School as well as the University of Wisconsin-Milwaukee. He sits on the Supreme Court of Wisconsin's Judicial Education Committee. He received the Leaders in the Law Award from the Wisconsin Law Journal. He was inducted into the Milwaukee Community Journal's Academy of Legends, named one of the Philanthropic 5 by the United Way, recipient of the Dean Howard B. Eisenberg Public Service Award from Marquette University Law School, voted "Jurist of the Year" by the Justinian Society of Lawyers, Professional of the Year by ONEMKE & The United Way, named Law Enforcement Official of the Year by Safe & Sound, received the William C. Frye Civic Engagement Award from the Greater Milwaukee Foundation, was named "Milwaukeean of the Year" and "Milwaukee's Most Trusted Public Official" by the Shepherd Express, was inducted into the Milwaukee Business Journal's 40 Under 40 Hall of Fame and received the Robert H. Frieber Social Justice Award from the Milwaukee Jewish Federation. Judge Mosley routinely speaks both nationally and internationally about Unconscious Bias and Black History. Also, as a kidney transplant recipient, he is an ardent supporter of Donate Life Wisconsin, the National Kidney Foundation, and Versiti (formerly the Blood Center of Wisconsin). He currently serves as a Donate Life Hollywood advisor to the television and movie industries to promote accurate depictions of



#FORKIDSHHEALTH SUMMIT PROGRAM

organ donation and transplant on television and in movies. In his spare time, Judge Mosley is a local Milwaukee foodie, and served as a 2022 James Beard Judge for the James Beard Foundation. Judge Mosley was recently honored by the Milwaukee Press Club with the “Headliner of the Year” Award in May.

VERONICA GUNN, MD, MPH, FAAP

CHIEF EXECUTIVE OFFICER AND CO-FOUNDER, GENESIS HEALTH CONSULTING

Dr. Gunn is CEO and co-founder of Genesis Health Consulting, the nation’s only health consulting firm solely focused on equitably, measurably and sustainably improving child health and well-being. Throughout her 25+ year career in clinical practice, research, policy and health care administration, Dr. Gunn has advocated for the use of evidence-based strategies to improve health outcomes in sustainable ways. Her experiences as a pediatrician, a health outcomes researcher and in health policy roles at the state and national levels give Dr. Gunn a unique perspective on systems-based approaches to sustainably improve health. She co-founded one of the first pediatric health innovation programs in the nation, supporting the development and implementation of novel models of care delivery and providing consultation to other health systems on pediatric health management. Prior to leading health system transformation for a prominent pediatric health system, Dr. Gunn served as the chief medical officer for the Tennessee Department of Health, where she developed and implemented legislative and administrative policies to improve the health of Tennesseans. Dr. Gunn is frequently invited to speak at industry, clinical and policy conferences internationally. She earned her undergraduate degree at Rhodes College and her medical degree at Vanderbilt University School of Medicine. She completed pediatric residency and chief residency at the Johns Hopkins Hospital and her master’s degree in public health with concentrations in health policy and analysis, and injury and violence prevention from the Johns Hopkins Bloomberg School of Public Health. Dr. Gunn is a Fellow of the American Academy of Pediatrics and is a board-certified pediatrician.



MARK DEL MONTE, JD

CEO/EXECUTIVE VICE PRESIDENT, AMERICAN ACADEMY OF PEDIATRICS

Del Monte leads a strong executive team at American Academy of Pediatrics (AAP) which serves 67,000 pediatrician, pediatric medical subspecialist and pediatric surgical specialist members. Prior to this role, Del Monte served as the AAP’s chief deputy and senior vice president for Advocacy and External Affairs where he directed the organization’s communications, public relations and advocacy activities. Del Monte chairs the board of the directors of the Primary Care Collaborative, and is a member of the board of directors of Reach Out and Read, and the Council of Medical Specialty Societies, and a member of the advisory board of the Morgan Stanley Alliance for Children’s Mental Health. Before joining the AAP’s Washington, DC office in 2005, Del Monte served as director of policy and government affairs for the AIDS Alliance for Children, Youth & Families, a national organization advocating for children and families with HIV/AIDS. Del Monte began his career working as a lawyer in his home state of California, providing direct legal services to low income children and families affected by HIV. Del Monte holds a law degree from the University of California, Berkeley, and a bachelor’s degree in economics from Gonzaga University.



ADDITIONAL SPEAKERS

RICHELLE ANDRAE, MPA

ASSOCIATE DIRECTOR OF GOVERNMENT RELATIONS, WISCONSIN PRIMARY HEALTH CARE ASSOCIATION

Andrae is the associate director of Government Relations for the Wisconsin Primary Health Care Association, the network for Wisconsin's 19 Community Health Centers. Together, these non-profit primary care clinics provided medical, dental and behavioral health services to nearly 300,000 Wisconsin residents in 2023. Andrae advances the mission of Community Health Centers through state and federal advocacy, identifying policy solutions to meet the needs of all patients, regardless of income or insurance status. Andrae previously worked at UW-Madison's Population Health Institute, Deloitte as a consultant with the State Department of Health Services and as an evaluator for Public Health Madison Dane County. She has a master's degree in public affairs from the La Follette School, and takes a pragmatic approach to bipartisan relationship development and policymaking.



NICHOLAS ANTOS, MD, FAAP

PEDIATRIC PULMONOLOGIST & MEDICAL DIRECTOR, SE WISCONSIN SCHOOL-BASED ASTHMA MANAGEMENT PROGRAM, CHILDREN'S WISCONSIN AND THE MEDICAL COLLEGE OF WISCONSIN

Dr. Antos, is an associate professor of pediatrics, director of the Pediatric Cystic Fibrosis (CF) Program at Children's Wisconsin and the Medical College of Wisconsin and the medical director of the Wisconsin Asthma Coalition's SE Wisconsin School-based Asthma Management Program. After growing up and training in Illinois, Dr. Antos came to Wisconsin for fellowship training, and has since dedicated his career to the care of children with chronic respiratory diseases - especially cystic fibrosis and asthma. His work focuses on using quality improvement methods to improve the care and outcomes of children with these diseases, specializing in CF newborn screening and asthma in schools. He has been a leader in the CF program for more than a decade and is proud to have had funding and leadership roles through the American Academy of Allergy, Asthma & Immunology, CF Foundation, CF Learning Network, Wisconsin Asthma Coalition and others.



NANCY ARCE-AGUILAR

FOODSHARE PROGRAM MANAGER, FEEDING AMERICA EASTERN WISCONSIN

Arce-Aguilar joined Feeding America Eastern Wisconsin in 2021 as a bilingual FoodShare specialist. Her current role oversees the program and educates the public, network partners and the team on FoodShare public policies and resources. Her work includes outreach at Children's Wisconsin and other sites in the Milwaukee community. Providing food resources and connecting community members with FoodShare and health care assistance. She additionally can provide BadgerCare Plus/Medicaid and Marketplace assistance since she is a certified health care navigator.



#FORKIDSHEALTH SUMMIT PROGRAM

KATE BEARDMORE, MPH

CLIMATE AND HEALTH PROGRAM EVALUATOR, WISCONSIN DEPARTMENT OF HEALTH SERVICES

Beardmore uses evaluation and monitoring best practices to understand how well the program is reaching its goals of adapting to, or mitigating the impacts of, climate change on human health. Beardmore graduated with her master's degree in public health with a focus on maternal and child health from St. George University in 2014, and received her bachelor's degree in communication and business administration from University of Wisconsin - Stevens Point in 2010.



AMANDA BEAVIN

PROGRAM MANAGER FOR COMMUNITY DATA AND RESEARCH, DATA YOU CAN USE

Beavin serves as a program manager for Community Data and Research at Data You Can Use. With a background in community-engaged research and community organizing, she is passionate about elevating the voices of communities through research and participatory decision-making. Beavin is particularly committed to advancing housing and health justice through community-centered, holistic interventions. She has been a member of the FoodCare Coalition since May 2024.



SARAH BEVERSDORF, MPH, MSW

MANAGER, COMMUNITY HEALTH, ASPIRUS HEALTH

At Aspirus Health, Beversdorf is the lead person for community health needs assessments and community benefit reporting. This involves organizing data in ways that are meaningful and also developing consistent and accurate approaches to data collection. Beversdorf also works closely with community stakeholders in Portage County and Wood County on their community health improvement efforts. Previous work has included attention to the health workforce pipeline (Northern Wisconsin Area Health Education Center), community-academic partnerships for health (the Medical College of Wisconsin) and public health workforce, advocacy and professional development Wisconsin Public Health Association and Wisconsin Association of Local Health Departments and Boards. Through these positions, Beversdorf had the opportunity to work on numerous special projects, including some that focused on school nursing, community health improvement, curriculum development and strategic planning.



JODI BLOCH

DIRECTOR, STATE AND LOCAL GOVERNMENT RELATIONS, CHILDREN'S WISCONSIN

Bloch joined Children's Wisconsin in 2016 as the director of state and local government relations. After graduating from the University of Wisconsin-Madison with a bachelor's degree in political science, Bloch worked for one of Wisconsin's U.S. Senators as a caseworker and statewide office manager. Later, she joined the Wisconsin Bankers Association where her duties included political fundraising and state and federal lobbying. Bloch then worked as the vice president of government relations and later a political affairs consultant to the Wisconsin Hospital Association. In this role, she was in charge of lobbying activities for state legislative issues related to health care workforce development, medical



#FORKIDSHEALTH SUMMIT PROGRAM

malpractice reform, Medicaid dental access and state budget issues related to the Medicaid program. Her government relations portfolio at Children's Wisconsin includes engaging with the Governor, state agencies and the state Legislature on key Children's Wisconsin state legislative and regulatory issues.

SAMANTHA BUSKO, MSN

SCHOOL DISTRICT NURSE, LITTLE CHUTE AREA SCHOOL DISTRICT

Busko is the school district nurse for Little Chute Area School District. She has a bachelor's degree in nursing and a master's degree in nursing education. As a school nurse, and a mother to asthmatic kids, Busko holds a strong passion for asthma care and prevention work. Busko has been a recipient of the Wisconsin Asthma Coalition, Asthma-In-Action Mini Grant, for the 2022-23 and 2023-24 school years. With these grants Busko's team has implemented additional education and prevention activities across the Little Chute Area School District.



SKYLAR CAPRIOLA, MPH

ORAL HEALTH EPIDEMIOLOGIST, WISCONSIN DEPARTMENT OF HEALTH SERVICES

Capriola received his Master of Public Health in epidemiology from the University of Michigan School of Public Health (UW-SPH). Capriola currently serves as the epidemiologist for Wisconsin Department of Health Services' Oral Health Program (OHP) where his primary responsibility involves overseeing Wisconsin's Oral Health Surveillance System. Prior to Capriola's work with the OHP, he served as a research specialist at UM-SPH where he helped a research group assess vaccine effectiveness as part of the Centers for Disease Control and Prevention's vaccine effectiveness network. In his free time, Capriola enjoys kayaking, hiking, gaming and watching sports (Go Blue!).



NATALIA CHALMERS, DDS, MHSc, PhD

CHIEF DENTAL OFFICER, CENTERS FOR MEDICARE & MEDICAID SERVICES

Dr. Chalmers is a board-certified pediatric dentist, oral health policy expert and public health advocate who brings more than 20 years of clinical, research, industry and regulatory experience to Centers for Medicare & Medicaid Services in her role as chief dental officer in the Office of the Administrator. Previously, Dr. Chalmers served as a dental officer at the U.S. Food and Drug Administration. Dr. Chalmers has devoted her career to transforming scientific and health care data and information into actionable insights to address equity, improve care and better inform policy and funding. Dr. Chalmers completed her Doctor of Dental Surgery degree at the Faculty of Dental Medicine of the Medical University of Sofia, a residency in pediatric dentistry at the University of Maryland School of Dentistry, and a doctorate in oral microbiology from the Graduate Partnerships Program of the University of Maryland School of Dentistry and the National Institute for Dental and Craniofacial Research at the National Institutes of Health, Post-doctoral Fellowship at the Forsyth Institute and Clinical Research Fellowship at the National Institute for Dental and Craniofacial Research, National Institutes of Health. Dr. Chalmers holds a master's degree in clinical research from Duke Medical University and a Certificate in Drug Development and Regulatory Science from the University of California San Francisco School of Pharmacy.



#FORKIDSHEALTH SUMMIT PROGRAM

Her research has translated into action, improving oral care and advocating for the role health policy can play across the lifespan—particularly when it embraces dental well-being as a facet of care for the whole person.

BRIDGET CLEMENTI, MBA

VICE PRESIDENT, CHILDREN'S WISCONSIN

Passionate about improving health outcomes of children and families, Clementi dedicates her professional and personal time to leading efforts that support child, family and community health and well-being. As vice president of Community Health for Children's Wisconsin, Clementi has nearly 25 years of proven experience in improving child health outcomes. She has successfully led innovative prevention and intervention community and school based programs, partnered for policy changes, launched population health initiatives and championed inclusion, diversity and equity efforts that result in positive outcomes for children and families across Wisconsin. As an established professional in the greater Milwaukee community, Clementi serves (past and present) on advisory boards and committees throughout local community and Wisconsin, is an active member of Children's Hospital Association's Community Health Affinity Group, Milwaukee Health Care Partnership and volunteers in her local community and church.



AMY L. CLINE, MSW, APSW

PROGRAM MANAGER - INJURY PREVENTION AND DEATH REVIEW, CHILDREN'S HEALTH ALLIANCE OF WISCONSIN

Cline supports child death review teams across Wisconsin as they review infant and child deaths, for the purpose of preventing future child deaths. Cline received her bachelor's degree in sociology and teaching English for speakers of other languages from the University of Wisconsin-La Crosse and a master's degree in social work from the University of Wisconsin-Milwaukee, where she focused on Community & Organizational Leadership, Children and Family Welfare and obtained a certification in trauma informed care. Before joining Children's Health Alliance of Wisconsin (the Alliance), Cline supported anti-violence efforts in Milwaukee County, by leading a collaborative of a multidisciplinary partners and advocates, an urgent advocacy response, and advisory board that worked to support youth experiencing commercial sexual exploitation. Cline is honored to expand her impact in the lives of children, youth, and families across her home state of Wisconsin in her role at the Alliance. In her free time, she enjoys playing in card leagues, working out at her local gym, watching Green Bay Packers and Milwaukee Bucks games and spending as much time outside as possible.



ABBY COLLIER, DrPH

DIRECTOR, NATIONAL CENTER FOR FATALITY REVIEW AND PREVENTION

Dr. Collier leads the National Center for Fatality Review and Prevention, providing essential support and training to fatality review teams nationwide. Her expertise spans best practices in fatality review, mitigating secondary trauma, improving data quality and equity, and fostering partnerships. Her academic research explores the intersection of individual well-being and organizational culture, and informing effective public health strategies.



#FORKIDSHEALTH SUMMIT PROGRAM

MOLLY COLLINS, MS

ADVOCACY DIRECTOR, AMERICAN LUNG ASSOCIATION

Collins is the advocacy director for Wisconsin and South Dakota at the American Lung Association. She has worked in the non-profit sector in Milwaukee for over 20 years. She received her master's degree in nonprofit management and leadership from UW-Milwaukee and her bachelor's degree in women's studies from University of Wisconsin-Madison. Collins is a volunteer with several organizations including the Felmers Chaney Advocacy Board, the McNeely Prison Education Consortium and the League of Women Voters. Gov. Evers appointed her to the Wisconsin Access to Justice Commission in 2024. Collins is passionate about connecting individuals to the levers of power and helping them to advocate for meaningful change.



CRAIG CZARNECKI

OUTREACH COORDINATOR, WISCONSIN DEPARTMENT OF NATURAL RESOURCES

Czarnecki has been with the Wisconsin Department of Natural Resources (DNR) for almost six years, and enjoys raising awareness and spreading the word on all things air quality. Czarnecki has a background in communications and journalism. Before joining the DNR, Czarnecki was a local news producer at TV stations in La Crosse, Green Bay and Madison. Czarnecki graduated from college in La Crosse with a degree in broadcasting and digital media. When he's not at work, he enjoys spending time with his wife and two kids (8 and 4 years old) at the family cabin in Wautoma, WI and cheering on the Packers, Badgers, Brewers and Bucks.



HARRY DETTINGER

CONSTRUCTION CONTRACTOR COORDINATOR, WISCONSIN DEPARTMENT OF HEALTH SERVICES

Before joining the Lead-Safe Homes Program, Dettinger and his company, Wallcovering One of Wisconsin, worked in the construction industry for over 40 years. He has completed projects for general contractors, government agencies, municipalities and private home owners. Dettinger is currently certified as a Lead Risk Assessor and Lead Abatement Supervisor. As a proud UW alumni, he is a volunteer tutor for English as a second language staff and graduate students.



MEGAN ELDERBROOK, MPH, CHES

EPIDEMIOLOGIST, WISCONSIN DEPARTMENT OF HEALTH SERVICES

Elderbrook is an epidemiologist for the Wisconsin Department of Health Services where she has worked in the Asthma Program since 2019. Prior to this, she was an epidemiologist for the Wisconsin Chronic Disease Prevention Program and the Wisconsin AIDS/HIV Program - both located in the Department of Health Services. Elderbrook earned her bachelor's degree in community health education from the University of Wisconsin-La Crosse and her Master of Public Health from the University of Wisconsin-Madison.



#FORKIDSHHEALTH SUMMIT PROGRAM

MARY EHLENBACH, MD

O'CONNOR FAMILY ASSOCIATE PROFESSOR OF PEDIATRICS, UNIVERSITY OF WISCONSIN SCHOOL OF MEDICINE & PUBLIC HEALTH | UW HEALTH KIDS

Dr. Ehlenbach is a pediatrician and the O'Connor Family Associate Professor of Pediatrics at the University of Wisconsin School of Medicine and Public Health. She is the co-founder and medical director of the Pediatric Complex Care Program at UW Health Kids in Madison, WI. She also serves as director of Diversity, Equity & Inclusion for the UW Department of Pediatrics. Dr. Ehlenbach's professional interests include optimizing the health, well-being and experience of care for children with medical complexity. Additionally, she is committed to promoting an environment of inclusion, accessibility, equity and anti-racism.



ELLEN ELLINGSWORTH, MS, RD, CD, CLC

HEALTH OFFICER, COLUMBIA COUNTY DEPARTMENT OF HEALTH AND HUMAN SERVICES

Ellingsworth took over as interim health officer for Columbia County in January of 2021, and officially took over the role in June of 2021. Prior to taking over as health officer, Ellingsworth worked as the Women, Infants, and Children director for Columbia County since January of 2018. Ellingsworth is a registered dietitian and has a master's degree in nutrition and food science from University of Wisconsin-Stout and a Bachelor of Science in kinesiology from University of Wisconsin Oshkosh.



CONSTANCE GUNDACKER, MD, MPH, FAAP

ASSISTANT PROFESSOR, INTERIM SECTION CHIEF, GENERAL AND COMMUNITY PEDIATRICS

PHYSICIAN LEAD, CHILDREN'S WISCONSIN-MIDTOWN CLINIC

ASSOCIATE DIRECTOR, GLOBAL & COMMUNITY HEALTH TRACK, THE MEDICAL COLLEGE OF WISCONSIN

Dr. Gundacker is an assistant professor and interim section chief for the Section of General and Community Pediatrics at the Medical College of Wisconsin. She is a community-engaged academic general pediatrician and the physician lead for Children's Midtown Clinic. Her clinical experiences as a pediatrician inform her research and educational interests, which focus on cross-sector collaborations to address social and structural drivers of health and pediatric health disparities.



LINDSAY HAAS

AIR QUALITY OUTREACH AND COMMUNICATIONS SPECIALIST, WISCONSIN DEPARTMENT OF NATURAL RESOURCES

Haas is an air quality specialist for the Wisconsin Department of Natural Resources (DNR). She graduated from the University of Wisconsin-Madison with a Bachelor of Science in conservation biology. Haas has worked for the DNR for over 20 years, and in the Air Management Program for most of those years. Prior to the DNR, Haas was an educator at the Environmental Education Program's Fox River Sanctuary for the Waukesha Public School District. Haas has a passion for the environment and protecting it. She enjoys the challenge of educating the public on air quality.



#FORKIDSHEALTH SUMMIT PROGRAM

MICHELLE HACKETT, RN, BSN, CEN

TRAUMA PROGRAM MANAGER AND PEDIATRIC EMERGENCY CARE COORDINATOR, PROHEALTH CARE

With 20+ years of emergency medical services and emergency department RN experience, Hackett has always been focused on improving pediatric emergency care. She is currently the trauma program manager and pediatric emergency care coordinator for ProHealth Care.



THOMAS HUFFER, MD, MS, FAAP

**EXECUTIVE MEDICAL DIRECTOR, HSHS ST. VINCENT CHILDREN'S HOSPITAL
PEDIATRICIAN, PREVEA HEALTH**

Dr. Huffer is a pediatrician with Prevea Health, and the executive medical director for HSHS St. Vincent Children's Hospital, both located in Green Bay, WI. In addition to being board-certified in pediatrics, he has a master's degree in medical administration and population health. He completed his pediatrics residency at the University of Wisconsin-Madison, and completed a transitional internship at the University of North Dakota.



LAMIKA JAMES, AAS

ASSOCIATE DIRECTOR OF COMMUNITY ENGAGEMENT, ALIA CONSULTING

James is passionate about empowering parents who have experienced the child protective service system. James' mission is to engage and support these families, ensuring their voices are heard and their insights drive community-led solutions. Through meaningful facilitation, James connects parents with resources, stakeholders and opportunities for collaboration. This approach not only strengthens community ties, but also fosters a supportive environment where parents can thrive. James' lived experience allows a deeper understanding of the complexities and challenges families face, adding depth to initiatives and ensuring efforts are both relevant and impactful. With over 15 years in parent leadership, James has effectively advocated for families in various roles, including as a family service coordinator with Rock County Head Start and a community engagement specialist with Children's Wisconsin. Additionally, James is a certified trainer of the Protective Factors through the Child Abuse and Neglect Prevention Board, equipping families and communities with essential tools to nurture resilience and support.



ERIKA KLUETMEIER

CLIMATE AND HEALTH COMMUNICATIONS STRATEGIST, WISCONSIN DEPARTMENT OF HEALTH SERVICES

Kluetmeier is a communications strategist for the Climate and Health Program at the Wisconsin Department of Health Services. In her role, she works with partners to raise awareness and drive behavior changes that safeguard the health and well-being of all Wisconsinites in the face of climate change-related health risks. She has nearly three decades of experience working with communities to create thriving, equitable and sustainable places to live, work and play.



#FORKIDSHEALTH SUMMIT PROGRAM

SARAH KROENING, MSpEd

PROGRAM MANAGER - ENVIRONMENTAL HEALTH, CHILDREN'S HEALTH ALLIANCE OF WISCONSIN

Kroening serves as program manager for the environmental health initiative, focusing on asthma health management and enhancing air quality monitoring in the Milwaukee area. In this role, she works with statewide and local partners to strengthen knowledge of air quality risk factors within neighborhoods and provides tools to use as proactive measures to protect health. She leads multiple program activities that follow nationally known models, to improve health outcomes for children with asthma. Kroening has a Bachelor of Arts in social work from the University of Wisconsin-Madison and a Master of Arts in special education from Cardinal Stritch University. Prior to joining the environmental health team, Kroening was an educational specialist with Children's Wisconsin and a special education teacher. She is excited to continue partnerships with local communities to build a healthier future for Wisconsin's children. In her free time, Kroening enjoys spending time with her family and friends, traveling, being a foodie, attending concerts and being outdoors.



JEREMY LEVIN, MHA

DIRECTOR OF ADVOCACY, RURAL WISCONSIN HEALTH COOPERATIVE

Levin is the director of advocacy at the Rural Wisconsin Health Cooperative (RWHC). Levin has been with RWHC since 2008, advocating at both the state and federal levels government in the area of health policy for their network of rural hospitals. Prior to his time at RWHC, Levin spent five years advocating for physicians at the Wisconsin Medical Society. He also worked in the Wisconsin State Legislature and served on the Dane County Board. Levin received his bachelor's degree from Denison University in Granville, OH and earned a Capstone Graduate Certificate from the La Follette School of Public Affairs at the University of Wisconsin-Madison. He received his Master of Healthcare Administration at the University of Minnesota.



MAUREEN LUETJE, DO

PEDIATRIC EMERGENCY PHYSICIAN, CHILDREN'S WISCONSIN AND THE MEDICAL COLLEGE OF WISCONSIN

Dr. Luetje completed her undergraduate degree in psychology at University of Wisconsin-Madison, followed by medical school at Kirksville College of Osteopathic Medicine. She spent the next six years completing her pediatric and pediatric emergency medicine training at Children's Hospital of Michigan in Detroit, MI before returning to Wisconsin as a Medical College of Wisconsin faculty member in the Department of Pediatrics in 2017. Dr. Luetje leads the efforts for pediatric disaster medicine at Children's Wisconsin, and she is the associate medical director for the emergency department for trauma, surgical, disaster and sedation services. She is also the medical director of pediatric readiness at Children's Wisconsin. Dr. Luetje is the principal investigator for the Pediatric Readiness program for Community Emergency Departments in Wisconsin.



#FORKIDSHEALTH SUMMIT PROGRAM

VAL MACMILLAN

INTERIM EXECUTIVE DIRECTOR, NOURISHMKE COMMUNITY FOOD CENTERS

MacMillan is the interim executive director for NourishMKE, formerly Friedens Food Pantries. She previously worked as a professional cook in local restaurants, and it was there she saw the power of food as a tool for so much more than basic sustenance. She went on to Mount Mary to receive her degree in sustainable nutrition, which combined the science of dietetics with sociology. In 2021 MacMillan entered the world of food justice and began working for NourishMKE, where she strives to make connections between food access and positive health outcomes, while continuing the work of building communities through food.



MEGAN MCGEE

EXECUTIVE DIRECTOR, EX FABULA

McGee grew up in Oshkosh, studied in Eau Claire and now lives in Milwaukee with husband John, 7-year-old Olivia and their husky Squishmallow. She has degrees in theatre, Spanish and literature. She combines scholarly research on the neuroscience of storytelling and feedback from community members in order to create applied arts programming that builds empathy and understanding and advances equity. Under her leadership, Ex Fabula has received awards including a 2020 MANDI for their Deaf Storytelling work and a 2021 Unity Award from Milwaukee Magazine.



TIFFANY MEREDITH, APSW, MSW

DIRECTOR OF LEARNING, ALIA CONSULTING

Meredith is a dedicated social work professional, passionate about supporting children and families impacted by child welfare. Meredith holds a Master of Social Work from the University of Wisconsin-Milwaukee. For more than two decades, Meredith has worked to protect children and support families through case management, leadership, team facilitation and curriculum development. In addition, Meredith specializes in training child welfare staff on the topics of safety intervention standards, child safety decision making and safety planning. Meredith is a Wisconsin native with a personal connection to relative caregiving. Ultimately, Meredith believes strengthening and empowering parents is key to protecting children. Meredith currently works with Alia Consulting, focusing on child welfare system change throughout the country and is founder of Tiffany L. Meredith Consulting.



JAMIE PENZA

PREPAREDNESS HEALTH EDUCATOR, WAUKESHA COUNTY PUBLIC HEALTH

Penza has been working in public health for approximately six years and has worked in various roles such as Women, Infants, and Children breastfeeding support, COVID pandemic response, Maternal Child Health coordinator and child death review coordinator. She studied teaching and holds a bachelor's degree in Spanish from the University of Wisconsin-Parkside, a certificate in Community Disaster Preparedness for Healthcare from Texas A&M University and recently completed her Graduate Certificate in public health from the University of Florida. In her free time, Penza enjoys board games, reading, art and spending time with her family and friends.



#FORKIDSHHEALTH SUMMIT PROGRAM

JESSICA SCHAUB, BSN, RN

SCHOOL NURSE, PORTAGE COMMUNITY SCHOOL DISTRICT

Schaub is a practicing school nurse and presently serves high school level students in multiple sites. She collaborates with her school nurse team to provide high quality health services. She joined the specialty area of school nursing in January 2022. Schaub is driven to provide care that is evidence based and supports students while in the school setting and at school-sponsored activities. She is interested in quality improvement, and she practices positivity and instills this mindset in others.



KIMBERLY SCHNEIDER, RN

PUBLIC HEALTH NURSE, WISCONSIN DEPARTMENT OF HEALTH SERVICES

Schneider is a public health nurse for Wisconsin Department of Health Services, in the Childhood Lead Poisoning Prevention Program, with 13 years of public health experience. Currently specializing in childhood lead, Schneider uses that experience to provide training and ensure comprehensive childhood lead poisoning prevention services are provided and documented by local health department staff. When she is not at work, Schneider enjoys spending time with her two daughters, playing volleyball and leading her daughter's Girl Scout troop.



JAY SHRADER, MHA

VICE PRESIDENT, COMMUNITY IMPACT AND SOCIAL ACCOUNTABILITY, MARSHFIELD CLINIC HEALTH SYSTEM

Shrader is the vice president of Community Impact and Social Accountability for the Marshfield Clinic Health System (MCHS), a large rural integrated health care system in Wisconsin and Michigan with 11 hospitals (including a Children's hospital), 65 clinical locations, a health plan and one of Wisconsin's largest private medical research institutes. In his role, Shrader is responsible for leading enterprise strategies to advance MCHS's mission to improve the health of the communities served by MCHS including, but not limited to: community health, community benefits, community engagement, health equity, diversity and inclusion. Shrader has been with MCHS for 13 years and has spent the last 6 years in his current role. Previously, Shrader worked for Security Health Plan and was a member of their Strategic Leadership team. He led the health plan's efforts around community health, wellness, disease management and care management, including an interim pharmacy leadership role. Before entering the health care field, Shrader served in the United States Army Reserve, and worked for over a decade in governmental public health at the local, regional and state level. Shrader holds a Bachelor of Community Health from Winona State University, and a Master of Healthcare Administration from the University of Minnesota.



#FORKIDSHHEALTH SUMMIT PROGRAM

TARA SKAR, BSDH, RDH

DIRECTOR OF REGIONAL OPERATIONS, NORTHLAKES COMMUNITY CLINIC

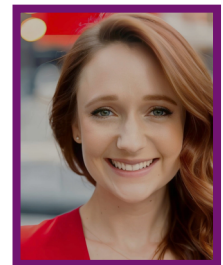
Skar is a dental hygienist that has been practicing for 16 years. Skar graduated from Chippewa Valley Technical College in 2008 with her associate's degree in dental hygiene. She received her Bachelor of Science in dental hygiene from Mankato University in 2022. Skar is the director of regional operations for NorthLakes Community Clinic, she has been with them for 10 years and has worked with their Seal-A-Smile program from the beginning. She is passionate about providing care to children in the schools, and is excited to share the work NorthLakes has been doing in their Seal-A-Smile program.



STEPHANIE THIEDE, RN, BSN

PUBLIC HEALTH NURSE, OUTAGAMIE COUNTY PUBLIC HEALTH

Thiede has a Bachelor of Science in medical microbiology and immunology from the University of Wisconsin-Madison and a Bachelor of Science in nursing from University of Wisconsin Oshkosh. Stephanie works to improve the health and safety of youth in her community through Maternal Child Health activities and as the facilitator for the Outagamie County child death review team. She has a lead role in local efforts to decrease injury and death including promoting consistent Safe Sleep messaging across the Fox Valley region, providing car seat installation education and resources to families, partnering with local youth serving organizations to distribute materials that reduce access to lethal means, and conducting trainings on naloxone administration. Prior to becoming a nurse, Thiede conducted research identifying new biomarkers for targeted therapies of advanced prostate cancer at the University of Wisconsin-Madison, and is listed in three publications.



AMY WILSON

DIRECTOR & FAMILY RESOURCE NAVIGATOR, FIRST 5 FOX VALLEY

Wilson has worked in the field of early childhood for over 25 years as a direct service provider, training and technical assistance support, Birth - Five outreach coordinator, Early Intervention team leader and most recently as the Help Me Grow Fox Valley director and family resource navigator. Wilson's passion is linking parents and caregivers of young children to critical community resources, so they feel confident in supporting their child's learning and growth. Wilson has a bachelor's degree in early childhood special education from University of Wisconsin-Eau Claire.



MOLLY ZEMKE, ASHP

PROGRAM MANAGER, WISCONSIN DEPARTMENT OF HEALTH SERVICES

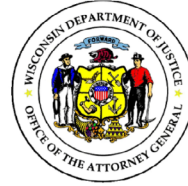
Zemke is the program manager for the Asthma-Safe Homes Program in the Bureau of Environmental and Occupational Health at the Wisconsin Department of Health Service's Division of Public Health. Zemke has worked in several areas of public health, in addition to environmental health, including violence prevention and maternal and child health. She completed her master's degree in public health at the University of Wisconsin-Madison.



#FORKIDSHHEALTH SUMMIT PROGRAM

SPONSORS AND EXHIBITORS

SUPER STAR



SHINING STAR



DELTA DENTAL OF WISCONSIN
FOUNDATION



BRIGHT STAR/EXHIBITOR



#FORKIDHEALTH SUMMIT PROGRAM

NATIONAL CHILD HEALTH DAY - MONDAY, OCT. 7

Join the conversation on social using #ForKidsHealth

Children are the building blocks for the future and ensuring their health is at the top of everything we do at the Alliance. In 1928, Congress established National Child Health Day to recognize the importance of children's health and we continue to support this message every day.

We all have the power to improve the health and well-being of children in Wisconsin whether it's influencing legislation, participating in a coalition, or raising awareness and educating others.

To recognize the importance of children's health and why you do what you do, please join us as we celebrate National Child Health Day on Monday, Oct. 7. Show your support for kids by posting a photo on social using #ForKidsHealth with our customizable sign at the National Child Health Day booth!

ALLIANCE STAFF LISTING

Amanda Bagin, MPH, CHES

Carissa Brunner, MPH, CLC

Amy L. Cline, MSW, APSW

Morgan Conti

Matt Crespino, MPH, RDH, FADHA (Executive Director)

Lindsay Deinhammer, BSN, RN

Sage Duncan

Tara Goris, MS

Carissa Hoium, MPH

Sarah Kroening, MSpEd

Sarah Leathrum

Karen Nash, MBA

Joanna O'Donnell, GC-C

Anna VerKuilen, MPH

Geeta Wadhvani, MPH, RN, BSN

Kasia Wiech, MS

THANK YOU FOR ATTENDING - WE APPRECIATE YOU

A heartfelt thank you to all our sponsors and partners in joining voices on behalf of children's health.

WWW.CHAWISCONSIN.ORG