



PUTTING THE SMILE INTO PRIMARY CARE

Integration as a Strategy for Enhancing Access to Quality Oral Health Care
Across the Lifetime





EVERY ROAD STARTS SOMEWHERE





MY ROAD TO BECOMING AN ADVOCATE FOR ORAL HEALTH



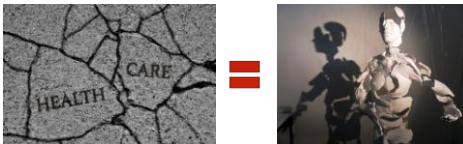
EARLY PIT STOPS AND EXPERIENCES



FINDING CALLING IN THE ROAD LESS TRAVELED



A FRAGMENTED SYSTEM



SILOS: WORK FOR AGRICULTURE, NOT FOR HEALTH CARE



TIME TO CHANGE THE DIALOGUE AND CULTURE



"If oral health is part of overall health, then oral healthcare is part of comprehensive healthcare."

THE NEW PARADIGM





BOTTOM LINE

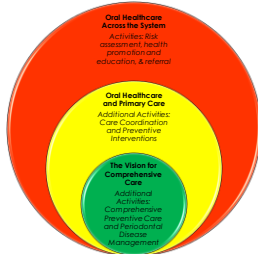
- Oral Health Care is EVERYONE'S responsibility in health care
- Dental Care is the responsibility of those with specific training, license and/or other credentials

INTEGRATION AS A **INNOVATION** IMPROVE ORAL HEALTH ACROSS THE LIFESPAN

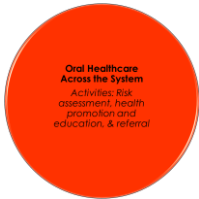




FRAMEWORK FOR INTEGRATION



INTEGRATION: SYSTEM WIDE



INTEGRATION OF ORAL HEALTHCARE ACROSS THE SYSTEM

- Could include the following activities as part of patient care:
 - Risk Assessment
 - Population/Panelscreening (data??)
 - Oral health screening
 - Social and Health History
 - May or may not include a visual assessment
 - Health Promotion and Education
 - Targeted patient education inclusive of oral health, when applicable
 - Refer
 - Facilitate referrals to local dental clinic



INTEGRATION ACROSS THE SYSTEM: WHO, HOW, & WHEN

- Who?
 - Health professionals and clinical staff
- Where?
 - Diverse health care settings (including primary care and specialty care – example: oncology, cardiology, STD/HIV clinics, etc.)
- When?
 - Initial visit/selected visits/each visit



INTEGRATION ACROSS THE SYSTEM: OPPORTUNITIES FOR ADVOCACY AND ACTION

- **Workforce:**
 - Ensure oral competencies are embedded in the curriculum of health professions training programs
 - Create/promote continuing education opportunities
- **Infrastructure:**
 - Information technology/electronic health records monitoring and evaluation
 - Promote interprofessional collaboration through information sharing
- **Access:**
 - Dental referral networks to facilitate referral



INTEGRATION: IN PRIMARY CARE



INTEGRATION OF ORAL HEALTHCARE AND PRIMARY CARE

- **Primary Care Defined:**
 - "Primary care includes health promotion, disease prevention, health maintenance, counseling, patient education, diagnosis and treatment of acute and chronic illnesses in a variety of health care settings (e.g., office, inpatient, critical care, long-term care, home care, day care, etc.). A primary care practice serves as the patient's first point of entry into the health care system and as the continuing focal point for all needed health care services." -AAFP
- Oral healthcare and preventive dental interventions, generally **Fluoride varnish**, can be integrated into comprehensive primary health care



ENHANCED INTEGRATION IN PRIMARY CARE: WHO, HOW, & WHEN

- Who?
 - Primary healthcare providers and clinical staff (including dental and non-dental)
- Where?
 - Family medicine, general pediatrics, general internal medicine, obstetrics, gerontology practices (all setting that provider primary care)
- How?
 - Use of oral health risk assessment tools
 - Delivery of preventive interventions (under standing order in some instances)
 - Information sharing (bi-directional)
- When?
 - Part of the comprehensive patient visit



INTEGRATION IN PRIMARY CARE: ADVOCACY AND ACTION OPPORTUNITIES

- Workforce:
 - Provide oral health training for primary care providers and non-dental clinical staff
 - Resources:
 - Smiles for Life³
 - Integration of Oral Health and Primary Care Practice, HRSA¹
 - May require amendments to practice acts to permit interprofessional collaborative practice
- Infrastructure:
 - Information technology/electronic health records monitoring and evaluation
 - Engage in interprofessional collaboration through clinical practice & information sharing
 - Resource: Oral Health: An Essential Component of Primary Care²
- Access:
 - Build interprofessional networks between primary care and dental to facilitate care coordination



EXAMPLES:



Source: <http://nachc.org/wp-content/uploads/2015/06/Integration-of-Oral-Health-with-Primary-Care-in-Health-Centers.pdf>



INTEGRATION: THE VISION



INTEGRATION: THE COMPREHENSIVE PRIMARY CARE VISION

- As we move toward a primary care system that supports prevention and management of "total patient health"
 - Provision of oral healthcare including preventive and chronic periodontal disease management services as part of comprehensive care



THE VISION FOR INTEGRATION: WHO, HOW, & WHEN

- Who?
 - Interprofessional care teams comprised of primary care and dental professionals working collaboratively to deliver comprehensive services
- Where?
 - Comprehensive primary care facilities
- How?
 - Provision of comprehensive preventive and chronic dental disease management services
- When?
 - Part of the comprehensive patient visit or as part of a special visit

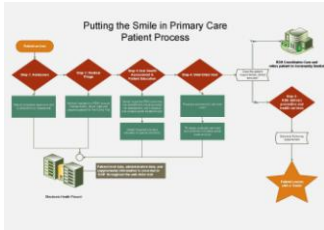


THE VISION FOR INTEGRATION: OPPORTUNITIES FOR ADVOCACY AND ACTION

- **Workforce:**
 - Practice acts must be aligned for interprofessional collaborative practice and to enable all team members work to the top of their training
 - Interprofessional competencies must be embedded in education
- **Infrastructure:**
 - Investment in interoperable electronic health records (medical and dental)
- **Access:**
 - Target dental shortage areas or school based primary care clinics
 - Reimbursement reforms to support new practice models



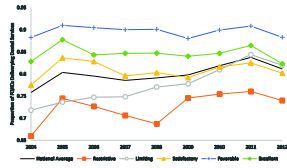
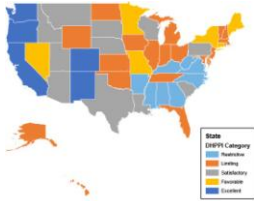
EXAMPLE: PUTTING THE SMILE IN PRIMARY CARE



TRUTH: ONE INNOVATION WILL NOT FIT ALL



STATE PRACTICE ACTS AS A LIMITING FACTOR



Source: <http://www.nationalacademies.org/education/2012/04/24/2012-04-24-01>

THE ROAD TO TRANSFORMATION



COLLABORATION: ALL ABOARD



QUESTIONS??????



RESOURCES

1. <http://www.hrsa.gov/publichealth/clinical/oralhealth/primarycare/>
2. <http://www.safetynetmedicalhome.org/sites/default/files/White-Paper-Oral-Health-Primary-Care.pdf>
3. <http://www.smileforlifeoralhealth.org/buildcontent.aspx?luts=555&pagekey=62948&cbreceipt=0>